

JAN 31 2001

LIBER 3121 PAGE 885

LAND CORNER RECORDATION CERTIFICATE  
Filing Requirement of Act 74, Mich. P.A. 1970

STATE OF MICHIGAN  
COUNTY OF MUSKEGON  
RECEIVED FOR RECORD

200 DEC 21 PM 12: 59

SECTION

For corners in

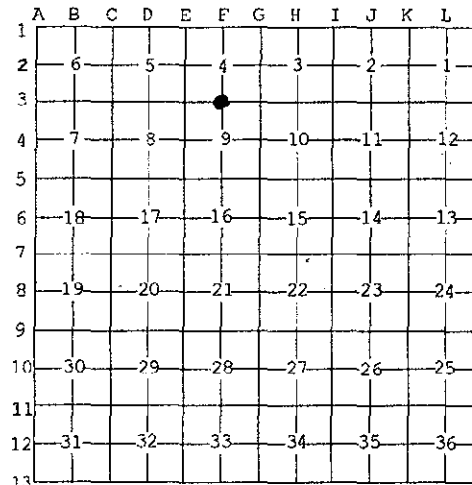
|                                       |                   |               |
|---------------------------------------|-------------------|---------------|
| <u>Muskegon</u><br>(County)           | Located In:       | Corner Code # |
| 1. Public Land Survey                 | T10N R14W         | F-3           |
|                                       | T ___ R ___       | _____         |
|                                       | T ___ R ___       | _____         |
|                                       | T ___ R ___       | _____         |
| 2. Property Controlling<br>in Section | S ___ T ___ R ___ | _____         |
|                                       | S ___ T ___ R ___ | _____         |
| 3. Miscellaneous<br>Property in Sec.  | S ___ T ___ R ___ | _____         |
|                                       | S ___ T ___ R ___ | _____         |

*Mark F. Fairchild*  
REGISTER OF DEEDS

Register of Deeds Stamp & File Number

4. Lot No. \_\_\_\_\_, Recorded Plat \_\_\_\_\_

5. Private Claims \_\_\_\_\_



I, Stephen v. Vallier, in a field survey on September 5, 2000 do hereby state that under requirements of P.A. 74, Michigan P.A. of 1970, the corner points mentioned in lines 1 and 2 above were in conformance with regulations and rules therefore as required in the current manual of survey instructions of the United States Department of the Interior, Bureau of Land Management or by a decree of a Court of Law and /or that the corner points mentioned in lines 3, 4 and 5 above were in conformance with the rules of the Michigan Board of Land Surveyors or by a Decree of a Court of Law; established, re-established, monumented, recovered, found as expressed below:

NOTE: Not more than 2 corners, all in the same town and range, may be recorded on this certificate.

A. Description of original monument and accessories and/or subsequent restoration:

1837 John Mullett (GLO) set post.  
S 50° E 20" Pine 9 Links  
S 20° W 20" Pine 12 Links

1960 Muskegon County Road Commission's witness tie book notes a 1/2" iron rod.  
N 68.95' 24" Oak  
SW 62.45' 10" Poplar  
SE 65.65' Power Pole

POSITION OF SAID *Restored*  
RECORDED CORNER *9/15/00*  
REVIEWED & RATIFIED *SV*  
BY MUSKEGON COUNTY  
PEER GROUP IN ACCORDANCE  
WITH P.A. 345, OF 1990

B. Description of corner evidence found and/or method applied in restoring or reestablishing corner:

Found a 1/2" iron rod in the centerline of road. This corner fits the witness tie to 24" Oak and is also within 0.6' of single-proportionate measure of mile.

The position was accepted of the existing corner due to historical usage and documentation.

C. Description of monument for corner and accessories established to perpetuate locating the position of the corner:

Replaced the 1/2" iron rod with a 2 3/4" x 30" cast-iron monument, which contains a "County Surveyors" cap, No. 28428.

|         |         |                            |                            |
|---------|---------|----------------------------|----------------------------|
| N 07° E | 57.30'  | 24" Twin Maple             | Found nail                 |
| S 33° E | 67.41'  | Power Pole                 | Found nail                 |
| N 02° E | 69.13'  | 30" Oak                    | Found nail                 |
| S 68° W | 82.14'  | 6" Oak                     | Set 20D nail on north side |
| S 03° W | 73.45'  | 12" Maple                  | Found nail                 |
| N 70° W | 159.94' | Power Pole with transistor | Set 20D nail on South side |



Signed by *Stephen Vallier*  
Surveyor's Michigan License No. 28428

Date 12/09/00

A2167