

JAN 31 2001

LIBER 3121 PAGE 658

LAND CORNER RECORDATION CERTIFICATE
Filing Requirement of Act 74, Mich. P.A. 1970

STATE OF MICHIGAN
COUNTY OF MUSKEGON
RECEIVED FOR RECORD

2001 DEC 20 PM 1:49

For corners in SECTION

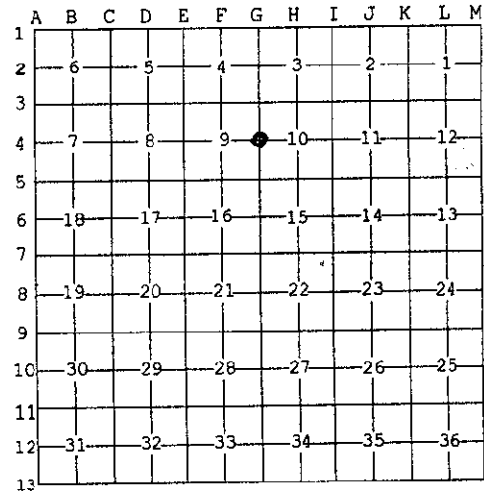
Form with fields: Muskegon (County), Located In: T10N R14W, Corner Code # G-4. Includes sections for Public Land Survey, Property Controlling in Section, and Miscellaneous Property in Sec.

Handwritten signature: Mark Fairchild, REGISTER OF DEEDS

Register of Deeds Stamp & File Number

4. Lot No. , Recorded Plat
5. Private Claims

I, Stephen V. Vallier, in a field survey on October 24, 2000 do hereby state that under requirements of P.A. 74, Michigan P.A. of 1970, the corner points mentioned in lines 1 and 2 above were in conformance with regulations and rules therefore as required in the current manual of survey instructions of the United States Department of the Interior, Bureau of Land Management or by a decree of a Court of Law and/or that the corner points mentioned in lines 3, 4 and 5 above were in conformance with the rules of the Michigan Board of Land Surveyors or by a Decree of a Court of Law; established, re-established, monumented, recovered, found as expressed below:



NOTE: Not more than 2 corners, all in the same town and range, may be recorded on this certificate.

A. Description of original monument and accessories and/or subsequent restoration:

- 1837 John Mullett (G.L.O.) set post. S 23° E 12" Maple 18 Links, N 01° W 8" Hemlock 14 Links
1938 Muskegon County Road Commission found an old decayed wood stake (2" Sq.) SW 53.20' 8" Oak, NW 36.15' 6" Oak
1986 C. F. Lewandowski found an iron rod and reset it with a 2 3/4" x 30" cast-iron monument containing a "County Surveyors" cap. recorded in LCRC, Liber 1345, Page 276. N 43° E 54.00' 20" Oak, S 17° E 81.35' Power Pole, S 74° E 68.65' NW Corner House Foundation

POSITION OF SAID RECORDED CORNER REVIEWED & RATIFIED BY MUSKEGON COUNTY PEER GROUP IN ACCORDANCE WITH P.A. 345, OF 1990. Includes handwritten note: Ratified 10/17/00

B. Description of corner evidence found and/or method applied in restoring or reestablishing corner:

A 2 3/4" cast-iron monument containing a "County Surveyors" cap was found buried 1' deep. The occupation line East and 5' South to the occupation to the West. The corner is an equal distance From G-3 to G-5. Position of the existing corner was accepted due to the historical usage and documentation. Witnesses verified with LCRC recorded in Liber 1345, Page 276. Note that in 1938 the Muskegon County Road Commission shows a hub found 5' East and 4.63' North of the existing corner. No evidence of a double corner.

C. Description of monument for corner and accessories established to perpetuate locating the position of the corner:

- A 2 3/4" x 30" cast-iron monument containing a "County Surveyors" cap was found in gravel road 1" deep. S 74° E 68.65' NW Corner Foundation of Hse. No. 990
S 17° E 83.23' Power Pole Found nail on NW side
S 24° W 102.77' Power Pole Found nail on E side
N 15° W 103.22' Power Pole Found nail on E side



Signed by [Signature]
Surveyor's Michigan License No. 28428

Date 12/19/00

Handwritten file number: A2126