

LIBER 1870 PAGE 66

LAND CORNER RECORDATION CERTIFICATE
Filing Requirement of Act 74, Mich. P.A. 1970

A1694

For corners in Muskegon County Located In: Corner Code #

1. Public Land Survey T 11N R 16W C-1 *Sq #1 W*

2. Property Controlling in Section S _____ T _____ R _____

3. Miscellaneous Property in Sec. S _____ T _____ R _____

APR 04 1996

STATE OF MICHIGAN
COUNTY OF MUSKEGON
RECEIVED

1995 DEC 12 AM 11:41

Register of Deeds Stamp & File Number

STATE OF MICHIGAN
COUNTY OF MUSKEGON
RECEIVED
1995 DEC 12 AM 11:41

4. Lot No _____, Recorded Plat _____

5. Private Claims _____

COMMISSION

	A	B	C	D	E	F	G	H	I	J	K	L	M
2	6	5	4	3	2	1							
3													
4	7	8	9	10	11	12							
5													
6	18	17	16	15	14	13							
7													
8	19	20	21	22	23	24							
9													
10	30	29	28	27	26	25							
11													
12	31	32	33	34	35	36							
13													

I, Donald G. Sandel, in a field survey on Nov. 11, 1995 hereby certify that under requirements of P.A. 74, Michigan P.A. of 1970, the corner points mentioned in lines 1 and 2 above were in conformance with regulations and rules therefore as required in the current manual of survey instructions of the United States Department of the Interior, Bureau of Land Management or by a decree of a Court of Law and/or that the corner points mentioned in lines 3, 4 and 5 above were in conformance with the rules of the Michigan Board of Land Surveyors or by a Decree of a Court of Law; established, re-established, monumented, re-monumented, recovered, found as expressed below:

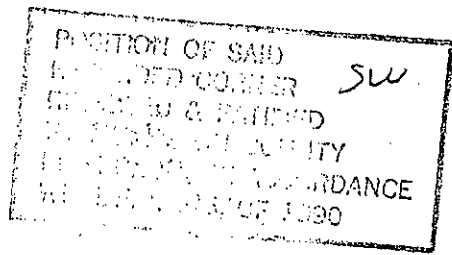
NOTE: Not more than 4 corners, all in the same town and range, may be recorded on this certificate.

A. Description of original monument and accessories and/or subsequent restoration:

- (1) GLO: Set post corner of Sections 31 and 32.
W. Oak 9" North 50°W .32 chains
W. Oak 9" North 83°E .30 chains

(2) MCRC (1950's) no witnesses found on record.

(3) Corner referenced to NE Corner of Lakewood Addition No. 5, Plat HG.



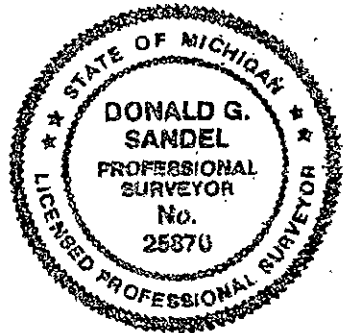
B. Description of corner evidence found and/or method applied in restoring or reestablishing corner:

(1) Found 1/2" D Bolt in 2" X 3' Pipe;

(2) Historical usage, documentation, and evidence of corner location reviewed and ratified by the Muskegon County Peer Group, March 7, 1995.

C. Description of monument for corner and accessories established to perpetuate locating the position of the corner:

- Set 2 3/4" X 20" Cast Iron "County Survey" monument in place of found 1/2" D Bolt; witnessed as follows:
North Azimuth
315° Az, found nail, 8" Oak, 57.36'
33° Az, found nail, Power Pole, 51.53'
9° Az, found nail, 12" Twin Oak, 66.89'
140° Az, set nail, Power Pole, 38.89'
221° Az, found nail, 28" Oak, 77.75'
S45°W, found NE corner conc. Block House corner, 121.17'



Witnessed by Donald G. Sandel Date 5 December 1995
Surveyor's Michigan License No. 25870