

1993

COMMISSION

LAND CORNER RECORDATION CERTIFICATE  
Filing Requirement of Act 74, Mich. P.A. 1970

For corners in

Muskegon  
(County)

Located In:

Corner Code ##

1. Public Land Survey	T <u>11N</u> R <u>16W</u>	<u>E 7</u>
	T ___ R ___	_____
	T ___ R ___	_____
	T ___ R ___	_____
2. Property Controlling in Section	S ___ T ___ R ___	_____
	S ___ T ___ R ___	_____
3. Miscellaneous Property in Sec.	S ___ T ___ R ___	_____
	S ___ T ___ R ___	_____

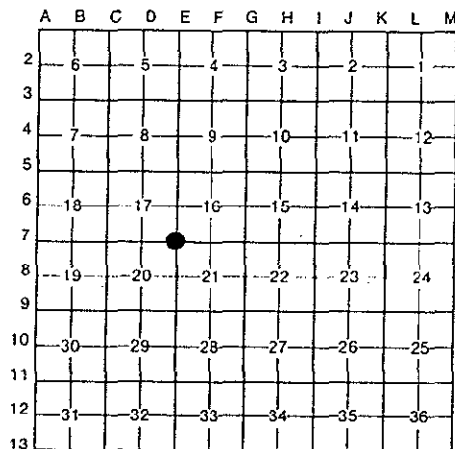
*Cassie Carter*  
REGISTER OF DEEDS

1993 DEC 29 PM 3: 07

STATE OF MICHIGAN  
COUNTY OF MUSKEGON  
REGISTER OF DEEDS RECORD

Register of Deeds Stamp & File Number

- 4. Lot No. \_\_\_\_\_, Recorded Plat \_\_\_\_\_
- 5. Private Claims \_\_\_\_\_



I, Ralph W. VanRiper, in a field survey on June 18, 1993, do hereby certify that under requirements of P.A. 74, Michigan P.A. of 1970, the corner points mentioned in lines 1 and 2 above were in conformance with regulations and rules therefore as required in the current manual of survey instructions of the United States Department of the Interior, Bureau of Land Management or by a decree of a Court of Law and/or that the corner points mentioned in lines 3, 4 and 5 above were in conformance with the rules of the Michigan Board of Land Surveyors or by a Decree of a Court of Law; established, re-established, monumented, re-monumented, recovered; found as expressed below:

NOTE: Not more than 4 corners, all in the same town and range, may be recorded on this certificate.

A. Description of original monument and accessories and/or subsequent restoration:

Section Corner common to Sections 16, 17, 20 and 21, T 11 N, R 16 W, Dalton Township

Set Post June 24, 1837 by GLO Surveyors

- Aspen 11" S 36° E 27 L
- Pine 9" S 19° W 15 L

B. Description of corner evidence found and/or method applied in restoring or reestablishing corner:

Found 3/4" Pipe in Monument Box, as per Muskegon County Road Comm. Witness Book	N 35° W 48.34'	28" Oak
	N 50° E 46.14'	28" Maple
	S 50° W 47.29'	12" Oak
Historical usage, documentation and evidence of corner location reviewed and ratified by Muskegon County Peer Group, June 15, 1993	S 40° W 56.53'	32" Oak
	NE 48.6'	Guy Pole
	S 40° W 56.60'	40" Oak

C. Description of monument for corner and accessories established to perpetuate locating the position of the corner:

Set 2 3/4" Cast Iron Monument with County Survey Cap in Monument Box

- N 40° E 54.74' Fd. Spike in 20" Pine
- N 65° E 72.63' Fd. Spike in 16" Pine
- S 35° E 79.29' Fd. Spike in 20" Maple
- S 45° W 56.53' Fd. Spike in 40" Oak
- S 65° W 85.00' Fd. Spike in Power Pole
- N 40° W 54.71' Set Spike in 10" Pine



Signed by Ralph W. VanRiper

Date Dec. 28, 1993

Surveyor's Michigan License No. 16946