

LAND CORNER RECORDATION CERTIFICATE  
Filing Requirement of Act 74, Mich. P.A. 1970

For corners in  
Muskegon  
(County)

Located In: \_\_\_\_\_  
Corner Code 11

1. Public Land Survey

T 11 N R 16 W E 8

2. Property Controlling  
in Section

S T R

3. Miscellaneous  
Property in Sec.

S T R

**SURVEY &  
REMONUMENTATION**

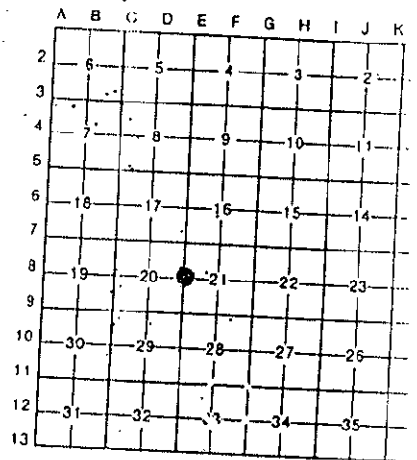
APR 04 1996

Register of Deeds Stamp & File Number

4. Lot No. \_\_\_\_\_, Recorded Plat \_\_\_\_\_

5. Private Claims \_\_\_\_\_

**COMMISSION**



I, Ralph W VanRiper in a field survey on July 11, 1995

do hereby certify that under requirements of P.A. 74, Michigan P.A. of 1970, the corner points mentioned in lines 1 and 2 above were in conformance with regulations and rules therefore as required in the current manual of survey instructions of the United States Department of the Interior, Bureau of Land Management or by a decree of a Court of Law and/or that the corner points mentioned in lines 3, 4 and 5 above were in conformance with the rules of the Michigan Board of Land Surveyors or by a Decree of a Court of Law; established, re-established, monumented, re-monumented, recovered, found as expressed below:

**NOTE: Not more than 4 corners, all in the same town and range, may be recorded on this certificate.**

A. Description of original monument and accessories and/or subsequent restoration:

1/4 Corner between Sections 20 and 21, T 11 N, R 16 W, Dalton Township  
Post set by GLO Surveyors in 1837 (Maple 15", S 36° E, 27L)  
(Hemlock 8", S 73° W, 30L)  
MCRC (1950's) Nothing shown at this corner  
MCRC Witness Book, Iron in Monument Box with 5 Witnesses, Corner recorded  
in Liber 1230, Page 471, by Donald Schiele, RLS No. 23517 in April of 1981

B. Description of corner evidence found and/or method applied in restoring or reestablishing corner:

Found 1" Pipe in Monument Box in Asphalt Road - Russell Road  
Verified Corner location with existing witnesses

POSITION OF CORNER  
RECORDED BY  
REVIEWED BY  
BY LAND SURVEYOR  
FIELD OFFICE  
WILLIAM H. HARRIS



C. Description of monument for corner and accessories established to perpetuate locating the position of the corner:

Set 2 3/4" Cast Iron Monument with County Survey Cap in Monument Box

- N 55° E 56.50' Face of Steel Fence Post
- S 80° E 44.39' Set Spike in S side of 8" Poplar
- S 45° E 61.66' Found Spike in NE side of 8" Pine
- S 30° W 110.22' Set Spike in E side of 20" Ash
- S 45° W 106.85' NE corner of House
- N 55° W 42.92' Set Spike in N side of 4" Sass.

Signed by Ralph W. VanRiper

Date Dec. 19, 1995

Surveyor's Michigan License No. 16946