

COMMISSION

LAND CORNER RECORDATION CERTIFICATE  
Filing Requirement of Act 74, Mich. P.A. 1970

*Carrie Carter*  
REGISTER OF DEEDS

1993 DEC 29 PM 3:08

STATE OF MICHIGAN  
COUNTY OF MUSKEGON  
RECEIVED FROM RECORD

For corners in

Muskegon  
(County)

Located In:

Corner Code //

- 1. Public Land Survey            T 11N R 16W            F 8  
    T \_\_\_\_\_ R \_\_\_\_\_  
    T \_\_\_\_\_ R \_\_\_\_\_  
    T \_\_\_\_\_ R \_\_\_\_\_
- 2. Property Controlling        S \_\_\_\_\_ T \_\_\_\_\_ R \_\_\_\_\_  
    in Section                    S \_\_\_\_\_ T \_\_\_\_\_ R \_\_\_\_\_
- 3. Miscellaneous                S \_\_\_\_\_ T \_\_\_\_\_ R \_\_\_\_\_  
    Property in Sec.            S \_\_\_\_\_ T \_\_\_\_\_ R \_\_\_\_\_

Register of Deeds Stamp & File Number

- 4. Lot No. \_\_\_\_\_, Recorded Plat \_\_\_\_\_
- 5. Private Claims \_\_\_\_\_

	A	B	C	D	E	F	G	H	I	J	K	L	M
2	6	5	4	3	2	1							
3													
4	7	8	9	10	11	12							
5													
6	18	17	16	15	14	13							
7													
8	19	20	21	22	23	24							
9													
10	30	29	28	27	26	25							
11													
12	31	32	33	34	35	36							
13													

I, Ralph W. VanRiper, in a field survey on June 18, 19 93, do hereby certify that under requirements of P.A. 74, Michigan P.A. of 1970, the corner points mentioned in lines 1 and 2 above were in conformance with regulations and rules therefore as required in the current manual of survey instructions of the United States Department of the Interior, Bureau of Land Management or by a decree of a Court of Law and/or that the corner points mentioned in lines 3, 4 and 5 above were in conformance with the rules of the Michigan Board of Land Surveyors or by a Decree of a Court of Law; established, re-established, monumented, re-monumented, recovered, found as expressed below:

**NOTE: Not more than 4 corners, all in the same town and range, may be recorded on this certificate.**

A. Description of original monument and accessories and/or subsequent restoration:

Center of Section 21, T 11 N, R 16 W, Dalton Township

Not set by GLO Surveyors

B. Description of corner evidence found and/or method applied in restoring or reestablishing corner:

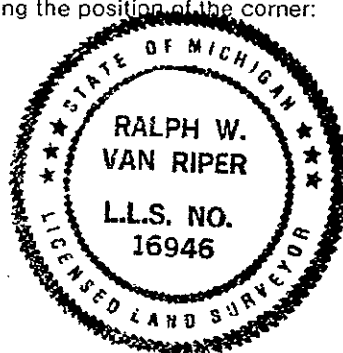
Found 1/2" Steel Rod	25" Maple	NE	49.78'
Recorded by Donald W. Schiele, RLS No. 23517	12" Pine	SE	44.52'
Liber 1230, Page 471 - Jan 5, 1982	32" Maple	SW	32.57'
	Power Pole	W	59.35'

Historical, usage, documentation and evidence of corner location reviewed and ratified by Muskegon County Peer Group, June 15, 1993

C. Description of monument for corner and accessories established to perpetuate locating the position of the corner:

Set 2 3/4" by 20" Cast Iron Monument with County Survey Cap

N 31° E 49.78'	Fd. Spike in 24" Maple
S 44° E 37.49'	Set Spike in 10" Pine
S 36° E 44.50'	Fd. Spike in 12" Pine
S 35° W 32.57'	Fd. Spike in 32" Maple
S 80° W 59.35'	Fd. Spike in Power Pole
N 33° W 63.07'	Set Spike in 12" Maple



Signed by Ralph W. Van Riper Date Dec. 28, 1993

Surveyor's Michigan License No. 16946