

COMMISSION

LAND CORNER RECORDATION CERTIFICATE
Filing Requirement of Act 74, Mich. P.A. 1970

For corners in
Muskegon

(County)

Located In:

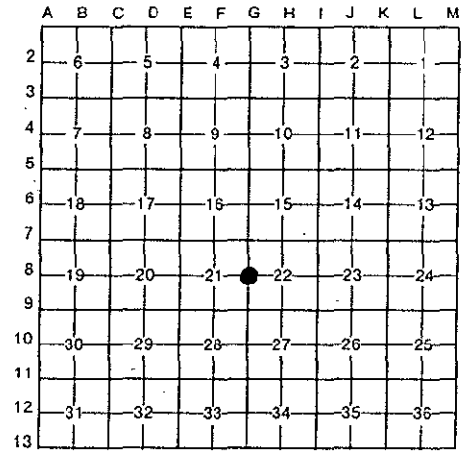
Corner Code #

1. Public Land Survey	T	<u>11N</u>	R	<u>16W</u>	<u>G 8</u>
	T	_____	R	_____	_____
	T	_____	R	_____	_____
	T	_____	R	_____	_____
2. Property Controlling in Section	S	_____	T	_____	R
	S	_____	T	_____	R
3. Miscellaneous Property in Sec.	S	_____	T	_____	R
	S	_____	T	_____	R

STATE OF MICHIGAN
COUNTY OF MUSKEGON
REGISTER OF DEEDS
1993 DEC 29 PM 3:08
Register of Deeds Stamp & File Number

- 4. Lot No. _____, Recorded Plat _____
- 5. Private Claims _____

I, Ralph W. VanRiper, in a field survey on May 28, 1993, do hereby certify that under requirements of P.A. 74, Michigan P.A. of 1970, the corner points mentioned in lines 1 and 2 above were in conformance with regulations and rules therefore as required in the current manual of survey instructions of the United States Department of the Interior, Bureau of Land Management or by a decree of a Court of Law and/or that the corner points mentioned in lines 3, 4 and 5 above were in conformance with the rules of the Michigan Board of Land Surveyors or by a Decree of a Court of Law; established, re-established, monumented, re-monumented, recovered, found as expressed below:



NOTE: Not more than 4 corners, all in the same town and range, may be recorded on this certificate.

A. Description of original monument and accessories and/or subsequent restoration:

1/4 Corner between Sections 21 and 22, T 11 N, R 16 W, Dalton Township
Post set June 23, 1837 by GLO Surveyors
Hemlock 20" N 12° E 30 L
Hemlock 13" S 08° W 13 L

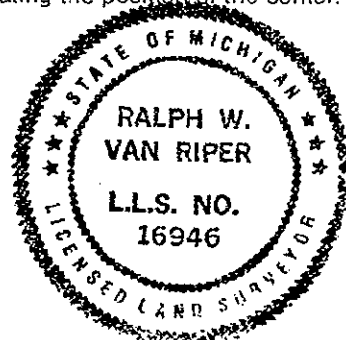
B. Description of corner evidence found and/or method applied in restoring or reestablishing corner:

Found 3/4" Steel Pipe	.22" Maple	NE 40.70'
Recorded by Donald W. Schiele, RLS No. 23517	Power Pole	SE 50.72'
Liber 1230, Page 473 - Jan. 5, 1982	8" Pine	W 63.62'
	12" Pine	NW 40.49'
	Nail at CL Road to E.	S 7.21'

Historical usage, documentation and evidence of corner location reviewed and ratified by Muskegon County Peer Group, May 18, 1993

C. Description of monument for corner and accessories established to perpetuate locating the position of the corner:

Set 4" by 20" Cast Iron Monument with County Survey Cap
N 31° E 70.56' Set Spike in 22" Willow
N 60° E 40.70' Fd. Spike in 26" Maple
S 37° E 51.63' Fd. "PK" Nail in Guy Pole
N 85° W 47.05' Fd. "PK" Nail in Power Pole
N 85° W 63.62' Fd. Spike in 16" Pine
N 47° W 40.49' Fd. Spike in 16" Pine



Signed by Ralph W. VanRiper
Surveyor's Michigan License No. 16946

Date Dec. 28, 1993