

SURVEY & REMONUMENTATION

LIBER. **1810** PAGE **640**

STATE OF MICHIGAN
COUNTY OF MUSKEGON
RECEIVED FOR RECORD

APR 28 1995

1994 DEC 29 AM 10:19

COMMISSION LAND CORNER RECORDATION CERTIFICATE
Filing Requirement of Act 74, Mich. P.A. 1970

For corners in
Muskegon

(County)

Located In:

Corner Code #

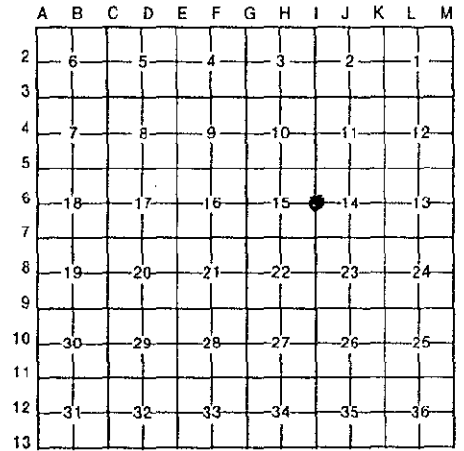
1. Public Land Survey	T	11N	R	16W	I 6
	T		R		
	T		R		
	T		R		
2. Property Controlling in Section	S		T	R	
	S		T	R	
3. Miscellaneous Property in Sec.	S		T	R	
	S		T	R	

Carrie Carter
REGISTER OF DEEDS

A 1664

Register of Deeds Stamp & File Number

4. Lot No. _____, Recorded Plat _____
5. Private Claims _____



I, Ralph W. VanRiper, in a field survey on November 4, 1994, do hereby certify that under requirements of P.A. 74, Michigan P.A. of 1970, the corner points mentioned in lines 1 and 2 above were in conformance with regulations and rules therefore as required in the current manual of survey instructions of the United States Department of the Interior, Bureau of Land Management or by a decree of a Court of Law and/or that the corner points mentioned in lines 3, 4 and 5 above were in conformance with the rules of the Michigan Board of Land Surveyors or by a Decree of a Court of Law; established, re-established, monumented, re-monumented, recovered, found as expressed below:

NOTE: Not more than 4 corners, all in the same town and range, may be recorded on this certificate.

A. Description of original monument and accessories and/or subsequent restoration:

1/4 Corner between Sections 14 and 15
T 11 N, R 16 W, Dalton Township
Set post July 22, 1837 by GLO Surveyors
16" Hemlock S 7° E 21 L
18" Hemlock S 47° W 14 L

B. Description of corner evidence found and/or method applied in restoring or reestablishing corner:

Found 1/2 Rod as per Muskegon County
Road Commission Witness Book

East 33.00 feet Sq. Bolt
NNE 121.80 feet 26" Oak
W 29.74 feet T.P.
E 54.05 feet 31" Oak
SW 40.15 feet 15" Elm Stump

POSITION OF SAID
RECORDED CORNER
REVIEWED & RATIFIED
BY MUSKEGON COUNTY
PEER GROUP IN ACCORDANCE
WITH P.A. 345, OF 1990
May 2, 1994 SW

C. Description of monument for corner and accessories established to perpetuate locating the position of the corner:

Set 2 3/4 Cast Iron Monument with
County Surveyor cap.
N 75° E 34.45' Concrete Monument
N 80° E 54.05' Fd. nail in 32" Oak
S 60° E 62.80' Set nail in 10" Maple
West 29.74' Fd. nail in Tel. Pole
N 60° W 37.01' Set nail in 14" Maple



Signed by *Ralph W. Van Riper* Date 12/27/94
Surveyor's Michigan License No. 16946