

SURVEY & REMONUMENTATION

1871 Pg. 624

A1738

APR 04 1996

COMMISSION

LAND CORNER RECORDATION CERTIFICATE
Filing Requirement of Act 74, Mich. P.A. 1970

STATE OF MICHIGAN
COUNTY OF MUSKEGON
RECORDED
1996 APR 13 PM 4:16

For corners in

Muskegon

(County)

Located In:

Corner Code #

1. Public Land Survey	T	11N	R	17W	C-11
	T		R		
	T		R		
	T		R		
2. Property Controlling in Section	S		T		R
	S		T		R
3. Miscellaneous Property in Sec.	S		T		R
	S		T		R

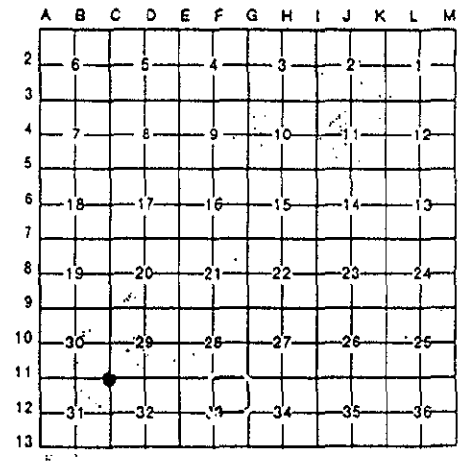
Register of Deeds Stamp & File Number

4. Lot No. _____, Recorded Plat _____
5. Private Claims _____

I, Stephen V. Vallier, P.S., in a field survey on November 7, 1995

do hereby certify that under requirements of P.A. 74, Michigan P.A. of 1970, the corner points mentioned in lines 1 and 2 above were in conformance with regulations and rules therefore as required in the current manual of survey instructions of the United States Department of the Interior, Bureau of Land Management or by a decree of a Court of Law and/or that the corner points mentioned in lines 3, 4 and 5 above were in conformance with the rules of the Michigan Board of Land Surveyors or by a Decree of a Court of Law; established, re-established, monumented, re-monumented, recovered, found as expressed below:

NOTE: Not more than 4 corners, all in the same town and range, may be recorded on this certificate.



A. Description of original monument and accessories and/or subsequent restoration:

- 1837 GLO set corner
- 1950's MCRC found Iron
- 1082 CF Lewandowski found 1" Iron Pipe reset with Cast Iron Monument 4" x 30" with County Survey Cap recorded LCRC Liber 1237 Page 424
- N 40 deg. E 36.90' 20" Pine
- N 70 deg. E 86.75' 12" Oak
- S 40 deg. E 82.14' 8" Maple
- S 45 deg. N 61.16' 10" Twin Oak
- N 50 deg. W 89.82' 10" Pine (see Exhibit "A")

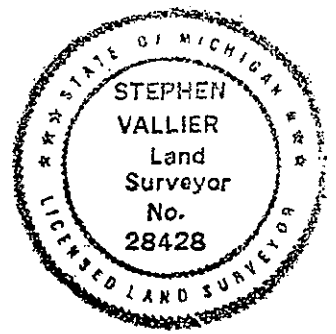
B. Description of corner evidence found and/or method applied in restoring or reestablishing corner:

Found 4" x 30" Cast Iron Monument with County Survey Cap in Monument Box. Checks witnesses LCRC Liber 1237 Page 424 and LCRC Liber 1666 page 740.

POSITION OF SAID RECORDED CORNER REVIEWED & RATIFIED BY MUSKEGON COUNTY PEER GROUP IN ACCORDANCE WITH P.A. 345, OF 1990
Nov. 7 1995

C. Description of monument for corner and accessories established to perpetuate locating the position of the corner:

- Found 4" x 30" Cast Iron Monument with County Survey Cap in Monument Box
- N 40 deg. E 36.90' 20" Pine
- N 70 deg. E 86.75' 12" Oak
- S 40 deg. E 82.14' 8" Maple
- S 45 deg. N 61.61' 10" Twin Oak
- N 50 deg. W 89.82' 10" Pine
- S 43 deg. W 61.59' 16" Oak
- S 48 deg. E 42.70' Utility Pole
- N 44 deg. E 41.03' Guy Pole
- N 40 deg. W 80.35' 12" Pine



Signed by Stephen Vallier Date Nov 13, 1995

Surveyor's Michigan License No. 28428