

STATE OF MICHIGAN
DEPARTMENT
OF
NATURAL RESOURCES

LAND CORNER RECORD

Marquette COUNTY

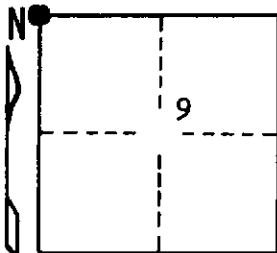
T 42 N R 25 W

DESCRIPTION OF CORNER Section corner for sections $\frac{5}{4}$
 $\frac{8}{9}$

CORNER MONUMENT 1" iron pipe with 4" aluminum cap

DATE MONUMENT PLACED AND WITNESSED 8/14/69, F. J. Bray

WITNESSES TO CORNER..... 7" Cedar (S. 5) (NBT) N 52° W, 22 links



12" Cedar (S. 4) (NBT) N 28° E, 28 links

10" Balsam (S. 9) (NBT) S 70° E, 02½ links

AND

CIRCLE CORNER REGISTERED

DESCRIPTION IN DETAIL AS TO HOW CORNER WAS LOCATED AND IDENTIFIED OR RESTORED.

This corner was replaced from old wood post. Down dead cedar with blazes and signatures near. Other blazed trees near. Check well with corners in the area. No original evidence found.

SURVEYOR'S SEAL

DISTRIBUTION:

SIGNED

Frank J. Bray
REGISTERED LAND SURVEYOR
Frank J. Bray

DATE 9/26/69

County Courthouse
Area Forester (Regions I & II)
District or Region Surveyor
Forestry Div., Lansing

R 4047
Rev. 10/68