

MICHIGAN
DEPARTMENT OF CONSERVATION
FORESTRY DIVISION

LAND CORNER RECORD

T. 42 N.R. 25 W

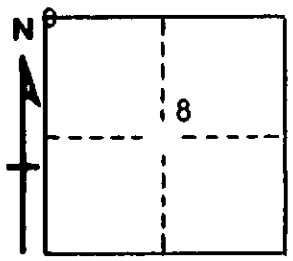
Marquette COUNTY

DESCRIPTION OF CORNER Section corner for sections $\frac{6}{5}$ $\frac{7}{8}$

CORNER MONUMENT 1" iron pipe with 4" aluminum cap

DATE MONUMENT PLACED AND WITNESSED 8/15/69, F. J. Bray

WITNESSES TO CORNER..... 6" Cedar (S.6) (NBT) N 31° W, 39½ links



6" Spruce (S.7) (NBT) S 33° W, 26 links

AND

DESCRIPTION IN DETAIL AS TO HOW CORNER WAS LOCATED AND IDENTIFIED OR RESTORED.

This corner was replaced from two old wood posts. One post down and rotted badly. Blazes on trees near. No original evidence found.

SURVEYOR'S SEAL

SIGNED Frank J. Bray DATE 10/6/69
REGISTERED LAND SURVEYOR
Frank J. Bray