

MICHIGAN
DEPARTMENT OF CONSERVATION
FORESTRY DIVISION

LAND CORNER RECORD

T. 43 N.R. 23 & 24 W

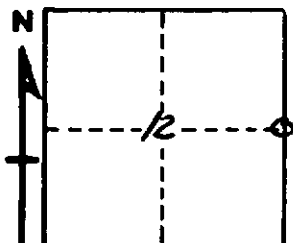
Marquette COUNTY

DESCRIPTION OF CORNER 1/4 Corner for Sections 7 and 12

CORNER MONUMENT One-inch galvanized pipe with 4-inch brass cap

DATE MONUMENT PLACED AND WITNESSED October 30, 1962 by Arne Metsa and Richard Bols

WITNESSES TO CORNER..... CEDAR 10 S 5 W 26.0 links



CEDAR 10 S 65 W 19.5 links

CEDAR 6 N 9 W 16.5 links

AND

CIRCLE CORNER REGISTERED

DESCRIPTION IN DETAIL AS TO HOW CORNER WAS LOCATED AND IDENTIFIED OR RESTORED.

Set from one original hemlock bearing tree (N 27 E 32 L). This BT stump was rotted and crumbling but a large slab of the outer shell showed the "1/4" scribe marked very plainly and also the face. The other BT was completely decayed. Two old posts stood near the BT but not at the proper location. A newer post set by A. Enger stood at proper location. Old line blazes ran N & S from the location.

SURVEYOR'S SEAL

SIGNED Arne A. Metsa DATE 10/31/62
REGISTERED LAND SURVEYOR