

STATE OF MICHIGAN  
DEPARTMENT  
OF  
NATURAL RESOURCES

LAND CORNER RECORD

Marquette COUNTY

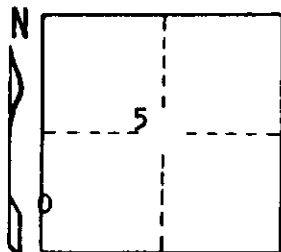
T 43 <sup>N</sup> R 24W

DESCRIPTION OF CORNER South 1/16 corner for sections 6/5

CORNER MONUMENT 1" iron pipe with 4" aluminum cap

DATE MONUMENT PLACED AND WITNESSED 8-28-72 F. J. Bray

WITNESSES TO CORNER..... 7" Cedar ( S 1/16 ) (BT) S44<sup>o</sup>E, 17.2'



11" Spruce ( S 1/16 ) (BT) S 74<sup>o</sup>W, 3.8'

AND

CIRCLE CORNER REGISTERED

DESCRIPTION IN DETAIL AS TO HOW CORNER WAS LOCATED AND IDENTIFIED OR RESTORED.

This corner was placed midway and on a line between the section corners to the south and  $\frac{1}{4}$  corner to the north.

SURVEYOR'S SEAL

DISTRIBUTION:

Forestry Division, Lansing

SIGNED

Frank J. Bray  
REGISTERED LAND SURVEYOR  
Frank J Bray

DATE

11-17-72