

STATE OF MICHIGAN
DEPARTMENT
OF
NATURAL RESOURCES
LAND CORNER RECORD

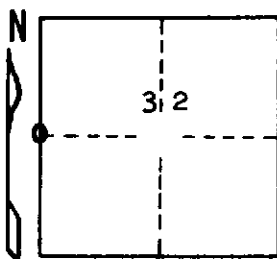
Marquette COUNTY
T 43 N R 24 W

DESCRIPTION OF CORNER 1/4 corner for sections 31/32

CORNER MONUMENT 1" iron pipe with 4" aluminum cap

DATE MONUMENT PLACED AND WITNESSED 9/8/69, F. J. Bray

WITNESSES TO CORNER..... 10" Cedar (1/4 S) (NBT) S 88° W, 18 links



10" Cedar (1/4 S) (NBT) S 60° E, 27½ links

AND

CIRCLE CORNER REGISTERED

DESCRIPTION IN DETAIL AS TO HOW CORNER WAS LOCATED AND IDENTIFIED OR RESTORED.

This corner was placed midway and on line between section corners to north and to south. Section corner to north falls in the Escanaba River and is not set. Meander corner is set on north bank of river 62.3 links north of section corner in river.

SURVEYOR'S SEAL

DISTRIBUTION:

SIGNED

Frank J. Bray
REGISTERED LAND SURVEYOR
Frank J. Bray

DATE 10/2/69

County Courthouse
Area Forester (Regions I & II)
District or Region Surveyor
Forestry Div., Lansing

R 4047
Rev. 10/68