

STATE OF MICHIGAN
DEPARTMENT
OF
NATURAL RESOURCES
LAND CORNER RECORD

Marquette COUNTY

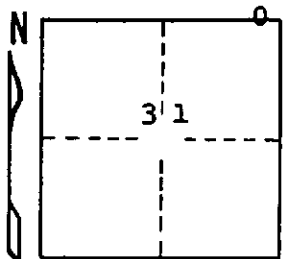
T 43 N R 24 W

DESCRIPTION OF CORNER Witness corner to meander corner for sections $\frac{30}{31}$

CORNER MONUMENT 1" iron pipe with 4" aluminum cap

DATE MONUMENT PLACED AND WITNESSED 9/12/69, F. J. Bray

WITNESSES TO CORNER..... 20" Cedar (BT) N 75° E, 19½ links



8" Balsam (BT) S 25° E, 28½ links

AND

CIRCLE CORNER REGISTERED

DESCRIPTION IN DETAIL AS TO HOW CORNER WAS LOCATED AND IDENTIFIED OR RESTORED.

This corner was placed on line between section corner in river to east and 1/4 corner to west. Corner lies 3.50 chains west of section corner in river.

SURVEYOR'S SEAL

DISTRIBUTION:

SIGNED

Frank J. Bray
REGISTERED LAND SURVEYOR

DATE 10/2/69

Frank J. Bray

County Courthouse
Area Forester (Regions I & II)
District or Region Surveyor
Forestry Div., Lansing

R 4047
Rev. 10/68