

STATE OF MICHIGAN
DEPARTMENT
OF
NATURAL RESOURCES

LAND CORNER RECORD

Marquette COUNTY

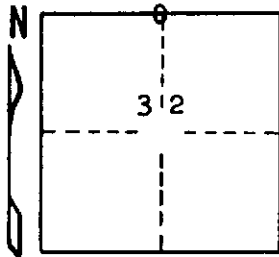
T 43 N R 24 W

DESCRIPTION OF CORNER 1/4 corner for sections ²⁹/₃₂

CORNER MONUMENT 1" iron pipe with 4" aluminum cap

DATE MONUMENT PLACED AND WITNESSED 9/23/69, Frank J. Bray

WITNESSES TO CORNER..... 10" Y. Birch (1/4 S) (NBT) N 05° E, 3 1/2 links



9" Cedar (1/4 S) (NBT) S 23° E, 24 links

AND

CIRCLE CORNER REGISTERED

DESCRIPTION IN DETAIL AS TO HOW CORNER WAS LOCATED AND IDENTIFIED OR RESTORED.

This corner was replaced from wood post which is proper distance and bearing from possible B.T. to N.E. which is rotted birch, found overgrowth of faces. Rotted wood found for B.T. to S.W. which was a spruce.

SURVEYOR'S SEAL

DISTRIBUTION:

SIGNED

Frank J. Bray
REGISTERED LAND SURVEYOR
Frank J. Bray

DATE 10/3/69

County Courthouse
Area Forester (Regions I & II)
District or Region Surveyor
Forestry Div., Lansing

R 4047
Rev. 10/68