

STATE OF MICHIGAN
DEPARTMENT
OF
NATURAL RESOURCES

LAND CORNER RECORD

Marquette COUNTY

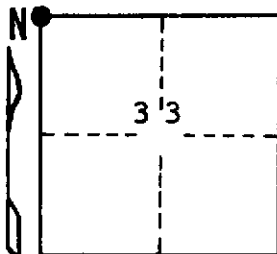
T 43 N R 24 W

DESCRIPTION OF CORNER Section corner for sections ^{29/28} 32/33

CORNER MONUMENT 1" iron pipe with 4" aluminum cap

DATE MONUMENT PLACED AND WITNESSED 9/23/69, F. J. Bray

WITNESSES TO CORNER..... 14" Cedar (S.29) (NBT) N 19° W, 17 links



7" Cedar (S.33) (NBT) S 30° E, 33 links

AND

CIRCLE CORNER REGISTERED

DESCRIPTION IN DETAIL AS TO HOW CORNER WAS LOCATED AND IDENTIFIED OR RESTORED.

This corner was replaced from point of rotted wood post which checks with B.T. (Cedar 12" S 68° E, 20 links) in poor condition, portions of both faces visible. Portion of scribe marks on lower faces. Depression in ground for B.T. to the NW.

SURVEYOR'S SEAL

DISTRIBUTION:

SIGNED

Frank J. Bray
REGISTERED LAND SURVEYOR
Frank J. Bray

DATE

10/3/69

County Courthouse
Area Forester (Regions I & II)
District or Region Surveyor
Forestry Div., Lansing

R 4047
Rev. 10/68