

✓

MICHIGAN  
DEPARTMENT OF CONSERVATION  
FORESTRY DIVISION

# LAND CORNER RECORD

T. 43 N R. 24 & 25 W

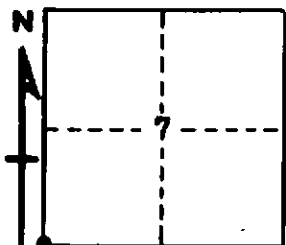
Marquette COUNTY

DESCRIPTION OF CORNER Section Corner Common to 7, 18, 12 and 13

CORNER MONUMENT 1-inch galvanized pipe with 4-inch aluminum cap.

DATE MONUMENT PLACED AND WITNESSED February 16, 1968. Placed by Arne Metsa and Anthony Moselle.

WITNESSES TO CORNER.....



CIRCLE CORNER REGISTERED

Cedar 6" N 8 E 40.5 links

Cedar 6" N 68 W 11.5 links

AND

Cedar 8" N 88 E 33.0 links

**DESCRIPTION IN DETAIL AS TO HOW CORNER WAS LOCATED AND IDENTIFIED OR RESTORED.**

Corner was set from original Tam. B.T.'s. The Tam. 9 N 13 E 38 links was a dead 10' stub on which part of the face and the notch showed very plainly. A small amount of scribe marking showed distinctly. All four of the other original tamarack B.T.'s were low broken off stumps of advanced stage of decay, except the Tam. 6 N 64 E 14 links which had been sawed off and on which part of the face could be seen but no scribe marks. All five B.T. stumps checked in species, size, bearing, and distance. A small, downed, dead spruce tree, squared for a corner, had stood very close to the correct location. A few old line blazes N-S and E-W intersected at correct location.

**SURVEYOR'S SEAL**

SIGNED

Arne A. Metsa  
REGISTERED LAND SURVEYOR

DATE

2-21-68