

STATE OF MICHIGAN
DEPARTMENT
OF
NATURAL RESOURCES

LAND CORNER RECORD

Marquette COUNTY

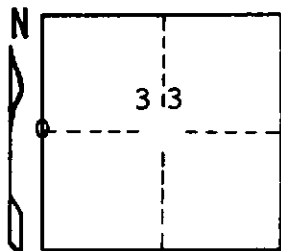
T 43 N R 25 W

DESCRIPTION OF CORNER 1/4 corner for section 32/33

CORNER MONUMENT 1" iron pipe with 4" aluminum cap

DATE MONUMENT PLACED AND WITNESSED 9/3/69, F. J. Bray

WITNESSES TO CORNER..... 6" Dead Cedar (1/4 S) (NBT) S 58° W, 77½ links



4" Leaning Cedar (1/4 S) (NBT) N 72° E, 38½ links

AND

CIRCLE CORNER REGISTERED

DESCRIPTION IN DETAIL AS TO HOW CORNER WAS LOCATED AND IDENTIFIED OR RESTORED.

This corner was placed midway and on line between section corners to north and to south. Corner lies in dry pond bed. No original evidence found.

SURVEYOR'S SEAL

DISTRIBUTION:

SIGNED

Frank J. Bray
REGISTERED LAND SURVEYOR
Frank J. Bray

DATE 9/23/69

County Courthouse
Area Forester (Regions I & II)
District or Region Surveyor
Forestry Div., Lansing

R 4047
Rev. 10/68