

MICHIGAN  
DEPARTMENT OF CONSERVATION  
FORESTRY DIVISION

# LAND CORNER RECORD

T. 43 N. R. 26 W

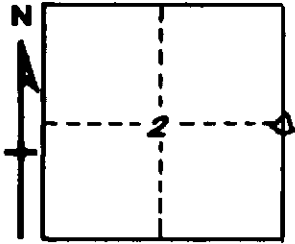
Marquette COUNTY

DESCRIPTION OF CORNER 1/4 corner between Sections 1 and 2

CORNER MONUMENT One-inch galvanized pipe with 4-inch aluminum cap.

DATE MONUMENT PLACED AND WITNESSED 8/12/64

WITNESSES TO CORNER..... Cedar 10 S 42 E 21 links



Cedar 15 N 78 W 23.25 links

AND

CIRCLE CORNER REGISTERED

**DESCRIPTION IN DETAIL AS TO HOW CORNER WAS LOCATED AND IDENTIFIED OR RESTORED.**

This corner was set from one original bearing tree (cedar 12 S 81 W 25 L.). The face had grown over but it had been partially exposed by chopping, showing scribe marks very distinctly. A cedar post stood at proper location and line blazed ran north and south. Corner was re-witnessed by A. Metsa and R. Bolz on 2/24/64, but because of the frozen condition of the swampy ground at that time the monument was not set until 8/12/64 by A. Metsa.

**SURVEYOR'S SEAL**

SIGNED

Aune A. Metsa  
REGISTERED LAND SURVEYOR

DATE

8-4-64