

STATE OF MICHIGAN  
DEPARTMENT  
OF  
NATURAL RESOURCES

LAND CORNER RECORD

Marquette COUNTY

T 43 N R 26W

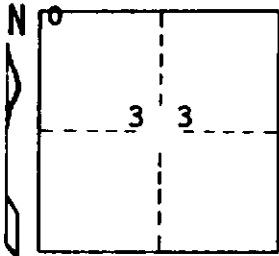
29/28  
32/33

DESCRIPTION OF CORNER Section corner for sections

CORNER MONUMENT 1" iron pipe with 4" aluminum cap

DATE MONUMENT PLACED AND WITNESSED 9-12-72 F. J. Bray

WITNESSES TO CORNER..... 14" Cedar (29) (NBT) N43°W, 19.9'



11" Cedar (S33) (NBT) S67°E, 19.7'

12" Cedar signature tree, S82°W, 10.5'

AND

CIRCLE CORNER REGISTERED

DESCRIPTION IN DETAIL AS TO HOW CORNER WAS LOCATED AND IDENTIFIED OR RESTORED.

This corner was replaced from old wood post noted by Marquette County Road Commission in the early 1920's. Blaze on signature tree facing corner approximately 50 years old. Old blazed lines leading in to wood post.

SURVEYOR'S SEAL

DISTRIBUTION: SIGNED \_\_\_\_\_  
REGISTERED LAND SURVEYOR  
Frank J. Bray

DATE 11-16-72

Forestry Division, Lansing