

STATE OF MICHIGAN  
DEPARTMENT  
OF  
NATURAL RESOURCES

LAND CORNER RECORD

Marquette COUNTY

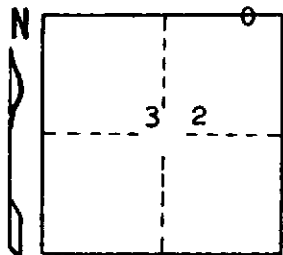
T 43 N R 26

DESCRIPTION OF CORNER East 1/16 Corner for Sections  $\frac{29}{32}$

CORNER MONUMENT 1" iron pipe with 4" aluminum cap

DATE MONUMENT PLACED AND WITNESSED 10-4-72 F. J. Bray

WITNESSES TO CORNER..... 5" Cedar ( E 1/16 ) (BT) N53<sup>b</sup> E, 13.0'



7" Cedar ( E 1/16 ) (BT) S45<sup>o</sup> W, 4.9'

AND

CIRCLE CORNER REGISTERED

DESCRIPTION IN DETAIL AS TO HOW CORNER WAS LOCATED AND IDENTIFIED OR RESTORED.

This corner was replaced from old wood post set by Surveyor Marcus McNabb  
in 1924.

SURVEYOR'S SEAL

DISTRIBUTION:

Forestry Division, Lansing

SIGNED

Frank J. Bray  
REGISTERED LAND SURVEYOR  
Frank J Bray

DATE

11-17-72