

STATE OF MICHIGAN
DEPARTMENT
OF
NATURAL RESOURCES

LAND CORNER RECORD

Marquette COUNTY

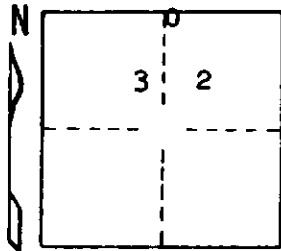
T 43 N R 26W

DESCRIPTION OF CORNER 1/4 Corner for Sections ²⁹/₃₂

CORNER MONUMENT 1/2" x 12" reinforcing rod buried in gravel road

DATE MONUMENT PLACED AND WITNESSED 10-4-72 F. J. Bray

WITNESSES TO CORNER..... 12" Balsam (NBT) N84° E, 19.7'



6" Elm (NBT) N86° W, 27.1'

AND

CIRCLE CORNER REGISTERED

DESCRIPTION IN DETAIL AS TO HOW CORNER WAS LOCATED AND IDENTIFIED OR RESTORED.

This corner was replaced from Marcus McNabb's notes of 1924. At that time a settler informed him he remembered an old wood post at this location.

SURVEYOR'S SEAL

DISTRIBUTION:

Forestry Division, Lansing

SIGNED

Frank J. Bray
REGISTERED LAND SURVEYOR
Frank J. Bray

DATE

11-17-72