

STATE OF MICHIGAN  
DEPARTMENT  
OF  
NATURAL RESOURCES  
LAND CORNER RECORD

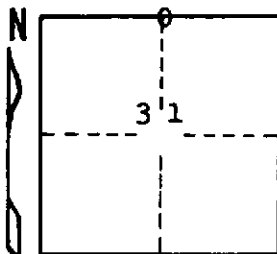
Marquette COUNTY  
T 44 N R 23 W

DESCRIPTION OF CORNER 1/4 corner for sections <sup>30</sup> 31

CORNER MONUMENT 1" iron pipe with 4" aluminum cap

DATE MONUMENT PLACED AND WITNESSED 5/16/69, F. J. Bray

WITNESSES TO CORNER..... 9" H. Maple (1/4 S) (NBT) S 80° W, 08½ links



7" H. Maple (1/4 S) (NBT) S 63° E, 09 links

AND

CIRCLE CORNER REGISTERED

DESCRIPTION IN DETAIL AS TO HOW CORNER WAS LOCATED AND IDENTIFIED OR RESTORED.

This corner was placed on line and the single proportioned distance between section corners to east and to west. Swamp edge to east checks fairly well. No original evidence found.

SURVEYOR'S SEAL

DISTRIBUTION:

SIGNED Frank J. Bray DATE 6/25/69  
REGISTERED LAND SURVEYOR  
Frank J. Bray

County Courthouse  
Area Forester (Regions I & II)  
District or Region Surveyor  
Forestry Div., Lansing

R 4047  
Rev. 10/68