

MICHIGAN  
DEPARTMENT OF CONSERVATION  
FORESTRY DIVISION

# LAND CORNER RECORD

T. 44 & 45 N.R. 25 W

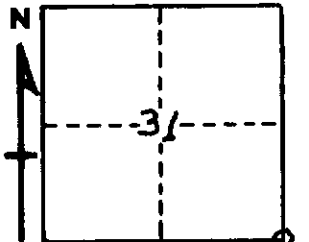
Marquette COUNTY

DESCRIPTION OF CORNER Section Corner Common to Sections 31, 32, 5 and 6

CORNER MONUMENT One-inch galvanized pipe with 4-inch brass cap.

DATE MONUMENT PLACED AND WITNESSED May 5, 1962 by A. Metsa and W. Oliver

WITNESSES TO CORNER..... Cedar 6 S 12 W 24.5 links



Cedar 6 N 11 W 38.0 links

Cedar 11 S 33 E 51.0 links

AND

CIRCLE CORNER REGISTERED

DESCRIPTION IN DETAIL AS TO HOW CORNER WAS LOCATED AND IDENTIFIED OR RESTORED.

This corner was set from three original B.T.'s. The tamarack to NW was an old weathered stump, but removing some of the decayed wood revealed part of the lower face with the notch and parts of scribe marks very distinct. The tree had been sawed off at the bottom of the upper face. The cedar to the south had rotted away leaving roots and a slab of the trunk but no scribe marks. The cedar to NE was a down tree, moss-covered and decayed with scribe marks or face no longer evident. Bearings and distances to the three B.T.'s checked.

SURVEYOR'S SEAL

SIGNED *A. Metsa* DATE 5/28/62  
REGISTERED LAND SURVEYOR