

MICHIGAN
DEPARTMENT OF CONSERVATION
FORESTRY DIVISION

LAND CORNER RECORD

T. 44N N. R. 30W

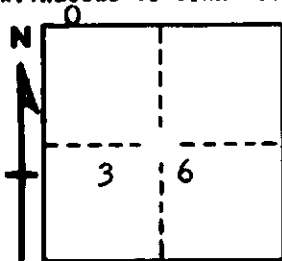
Dickinson COUNTY

DESCRIPTION OF CORNER West 1/8 corner for sections $\frac{25}{36}$

CORNER MONUMENT 1" iron pipe with 4" brass cap.

DATE MONUMENT PLACED AND WITNESSED 9/21/62

WITNESSES TO CORNER..... 5" Y. Pine (BT) S87°W, 16 links



22" W. Pine stump (BT) S21°E, 36½ links

6" W. Spruce (BT) N66°E, 42½ links

AND

CIRCLE CORNER REGISTERED

DESCRIPTION IN DETAIL AS TO HOW CORNER WAS LOCATED AND IDENTIFIED OR RESTORED.

This corner was placed midway and on line between section corner to west and 1/4 corner to east.

SURVEYOR'S SEAL

SIGNED Billy D. Buckler DATE January 17, 1963
REGISTERED LAND SURVEYOR

Billy D. Buckler