

Lansing

Cons. 4047  
Rev. 10/60

MICHIGAN  
DEPARTMENT OF CONSERVATION  
FORESTRY DIVISION

LAND CORNER RECORD

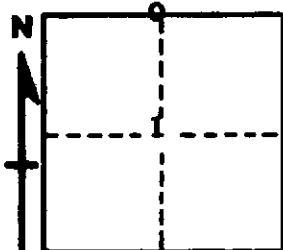
T. 44-45 N.R. 30 W  
Dickinson  
A.O.E. XXXX - Marquette COUNTY

DESCRIPTION OF CORNER 1/4 Cor. between Sec. 1 & 36

CORNER MONUMENT 1" iron pipe with 4" aluminum cap

DATE MONUMENT PLACED AND WITNESSED 6/17/68

WITNESSES TO CORNER.....



White Birch 10 N 87-1/2 W 98 lks. (1/4 S NBT)

North tree of twin White Oaks 7 N 87 E 32 lks. (1/4 S NBT)

AND

CIRCLE CORNER REGISTERED

DESCRIPTION IN DETAIL AS TO HOW CORNER WAS LOCATED AND IDENTIFIED OR RESTORED.

Corner replaced from stumps of two original White Pine BT's. Stump to NW is in poor condition, but stump to NE has axe notch visible on burned lower blaze. Both stumps agree with original notes in species, relative size, bearing, and distance. 1-1/2" O.D. by 31" iron pipe previously set by unknown surveyor 2.8 lks. north of monument set by undersigned on above date. Corner is 40.08 chains westerly of monument purporting to be corner of T44-45N, R29-30W. Corner checks well with field note calls to ridge tops 6.00 chains East and 4.00 chains West. Corner located by undersigned on 6/14/68 while making reconnaissance survey for retacement of north line of T44N, R30W.

SURVEYOR'S SEAL

SIGNED Arthur O. Enger DATE 6/27/68  
REGISTERED LAND SURVEYOR