

STATE OF MICHIGAN  
DEPARTMENT  
OF  
NATURAL RESOURCES

LAND CORNER RECORD

Marquette-Dickinson COUNTY

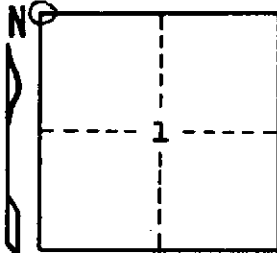
T 44-45 R 30W

DESCRIPTION OF CORNER Section Corner 1, 2, 35, and 36

CORNER MONUMENT 1" I.D. x 36" iron pipe with 4" aluminum cap

DATE MONUMENT PLACED AND WITNESSED July 29, 1968

WITNESSES TO CORNER..... White Pine 22 S19°W 44½ lks. "S2 NBT"



West end of North bridge rail, center of "O".  
in numbers "1910" inscribed in rail - S81°E 42 lks.

West end of South bridge rail, center of "O". in  
numbers "1910" inscribed in rail - S44°E 37 lks.

AND

1½" iron pipe marked as "section corner" is N6°E 50.2 lks.

CIRCLE CORNER REGISTERED

DESCRIPTION IN DETAIL AS TO HOW CORNER WAS LOCATED AND IDENTIFIED OR RESTORED.

This monument was placed 40.00 chains record distance west of 1/4 corner between Sec. 1 and 36, T44-45N, R30W (original evidence present) on line between that corner and Sec. Cor. 4, 5, 32, & 33, T44-45N, R30W. Corner was established at 40.00 chains rather than proportionately because it appears more consistent with calls to natural features along this 281.01 chain (record: 280.00 chain) segment of township line, as mentioned in original field notes.

There is an iron pipe, with steel cap marked to represent this corner, bearing N6°01'20"E 0.502 chains from the corner described above. The exact history of this pipe is not known (State Highway Dept. and Milwaukee Road Railroad inquiries were made but revealed no information) but the owner of adjoining property believes it was placed there by the State Highway Dept. during the construction of Highway M-95, about 1937 or 1938, although he was not an eye witness to its placement. Measurements from original corners North and South lend less support to this monument than to the monument recorded herein. From the subject monument an original 1/4 corner (between Sec. 13 & 14, T44N, R30W) lies S0°04'28"W 199.712 chains (record distance is 199.81 chains) and an original meander corner  
(continued on other side)

SURVEYOR'S SEAL

SIGNED

Arthur O. Enger  
REGISTERED LAND SURVEYOR

DATE

10/20/69

DISTRIBUTION:

County Courthouse  
Area Forester (Regions I & II)  
District or Region Surveyor  
Forestry Div., Lansing

R 4047  
Rev. 10/68