

LAND CORNER RECORDATION CERTIFICATE
Filing Requirement of Act 74, Mich. P.A. 1970

For corners in Marquette (County)

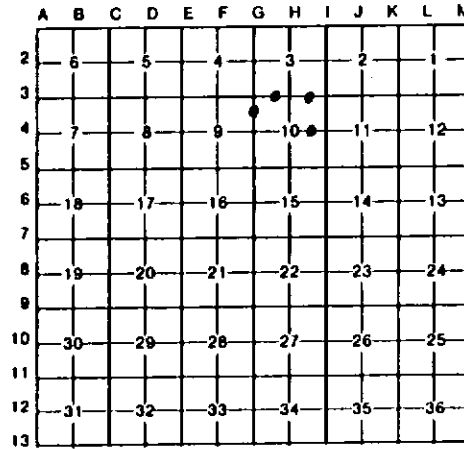
Located In: Corner Code //

- 1. Public Land Survey T 45N R 24W
2. Property Controlling in Section S 10 T 45N R 24W 1, 3, 9, 2
3. Miscellaneous Property in Sec. S T R
4. Lot No. Recorded Plat
5. Private Claims

Register of Deeds Stamp & File Number

I, Paul Bressette, in a field survey on July 20, 1994 do hereby certify that under requirements of P.A. 74, Michigan P.A. of 1970, the corner points mentioned in lines 1 and 2 above were in conformance with regulations and rules therefore as required in the current manual of survey instructions of the United States Department of the Interior, Bureau of Land Management or by a decree of a Court of Law and/or that the corner points mentioned in lines 3, 4 and 5 above were in conformance with the rules of the Michigan Board of Land Surveyors or by a Decree of a Court of Law; established, re-established, monumented, re-monumented, recovered, found as expressed below:

NOTE: Not more than 4 corners, all in the same town and range, may be recorded on this certificate.



A. Description of original monument and accessories and/or subsequent restoration:

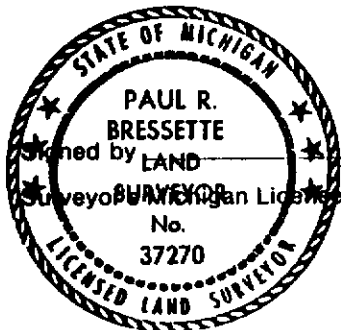
- 2 East one-sixteenth corner common to Sections 3 and 10. Not set in original survey, no evidence of subsequent establishment
1 West one-sixteenth corner common to Sections 3 and 10. Not set in original survey, no evidence of subsequent establishment.
3 North one-sixteenth corner common to Sections 9 and 10. Not set in original survey, no evidence of subsequent establishment.
9 East one-sixteenth corner of Section 10. Not set in original survey, no evidence of subsequent establishment.

B. Description of corner evidence found and/or method applied in restoring or reestablishing corner:

- 2 Corner position established mid-point and on-line between the northeast and north quarter corners of Section 10.
1 Corner position established mid-point and on-line between the northwest and north quarter corners of Section 10.
3 Corner position established mid-point and on-line between the northwest and west quarter corners of Section 10.
9 Corner position established mid-point and on-line between the East Quarter and Center Quarter corners of Section 10.

C. Description of monument for corner and accessories established to perpetuate locating the position of the corner:

Table with 4 columns: 2 DNR Monument, 1 DNR Monument, 3 DNR Monument, 9 DNR Monument. Rows list monument types and measurements (e.g., 6" Maple N44E 13.9', 4" Sugar N16E 16.9', 9" Cedar N41E 34.1', 8" Ironwood N67E 14.35').



Paul R. Bressette Date
37270