

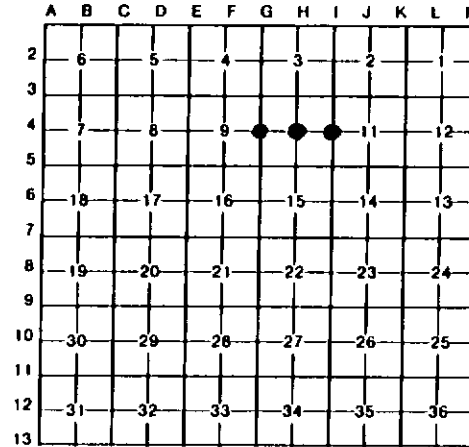
LAND CORNER RECORDATION CERTIFICATE
Filing Requirement of Act 74, Mich. P.A. 1970

For corners in

Table with columns: Marquette (County), Located In: (Town/Range/Section), Corner Code // (G-4, H-4, I-4). Rows include Public Land Survey, Property Controlling in Section, Miscellaneous, and Private Claims.

Register of Deeds Stamp & File Number

I, Paul Bressette, in a field survey on July 26, 1994, do hereby certify that under requirements of P.A. 74, Michigan P.A. of 1970, the corner points mentioned in lines 1 and 2 above were in conformance with regulations and rules therefore as required in the current manual of survey instructions of the United States Department of the Interior, Bureau of Land Management or by a decree of a Court of Law and/or that the corner points mentioned in lines 3, 4 and 5 above were in conformance with the rules of the Michigan Board of Land Surveyors or by a Decree of a Court of Law, established, re-established, monumented, re-monumented, recovered, found as expressed below:



NOTE: Not more than 4 corners, all in the same town and range, may be recorded on this certificate.

A. Description of original monument and accessories and/or subsequent restoration:

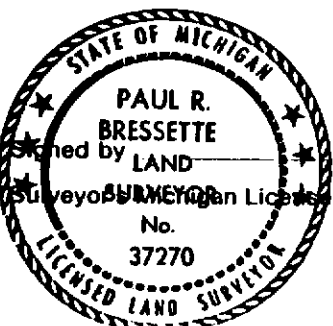
- G-4 Quarter Corner common to Sections 9 and 10. 1905: Charles Cummings, County Surveyor. Drawing in Marquette County Courthouse shows fence corner.
H-4 Center Quarter Corner of Section 10. Not set in original survey, no evidence of subsequent establishment.
I-4 Quarter Corner common to Sections 10 and 11. Found axle shaft, not of record.

B. Description of corner evidence found and/or method applied in restoring or reestablishing corner:

- G-4 Found a north-south fence line and a fence running northeast around an orchard. Local land-owner claims his uncle said corner is within five feet of large maple at this intersection and he had seen an axle shaft in place. No evidence of axle shaft found. Retracing north along fence found remains of hemlock stump on knob as described in original notes and in good relation to leave swamp call to north. Re-established corner position at record distance from hemlock stump and in line with north-south fence. Distance to swamp to south checks well. Corner falls about six feet south of maple at fence intersection.
H-4 Corner position established at the intersection of the north-south and east-west quarter lines of Section 10.
I-4 Corner position re-established at axle shaft. Axle shaft has been used by previous surveyors. Distance north to where stream crosses road checks with GLO survey (measured 878.8', GLO measurement 874.5'). Replaced axle shaft with DNR monument and witnessed. Set axle shaft beside monument.

C. Description of monument for corner and accessories established to perpetuate locating the position of the corner:

Table with columns: G-4 DNR Monument, H-4 DNR Monument, I-4 DNR Monument. Lists monument types (e.g., 5" R. Maple, 5" Sugar, 8" Y. Birch) and their bearings and distances.



Paul R. Bressette, Date