

LAND CORNER RECORDATION CERTIFICATE
Filing Requirement of Act 74, Mich. P.A. 1970

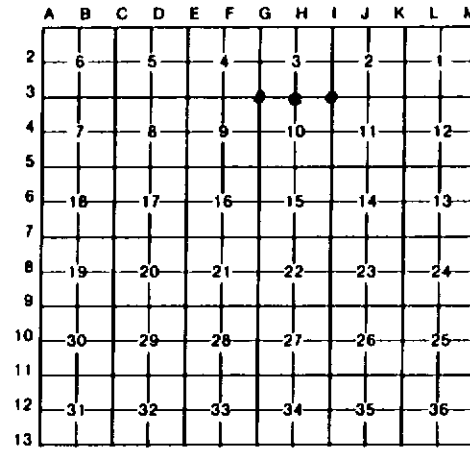
For corners in

Table with columns: Marguette (County), Located In, Corner Code. Rows include Public Land Survey, Property Controlling in Section, Miscellaneous Property in Sec., Lot No., and Private Claims.

Register of Deeds Stamp & File Number

I, Paul Bressette, in a field survey on July 20, 1994, do hereby certify that under requirements of P.A. 74, Michigan P.A. of 1970, the corner points mentioned in lines 1 and 2 above were in conformance with regulations and rules therefore as required in the current manual of survey instructions of the United States Department of the Interior, Bureau of Land Management or by a decree of a Court of Law and/or that the corner points mentioned in lines 3, 4 and 5 above were in conformance with the rules of the Michigan Board of Land Surveyors or by a Decree of a Court of Law; established, re-established, monumented, re-monumented, recovered, found as expressed below:

NOTE: Not more than 4 corners, all in the same town and range, may be recorded on this certificate.



A. Description of original monument and accessories and/or subsequent restoration:

- G-3 Section Corner common to Sections 3, 4, 9, and 10. 1905: Charles Cummings, County Surveyor. Reset from Maple bearing tree, NW. No witnesses listed.
H-3 Quarter Corner common to Sections 3 and 10. 1852: A.D. Sullivan, Deputy Surveyor. Set wood post witnessed by: Hemlock 15 S3 1/2 W 23 links; Hemlock 12 N40W 8 links.
I-3 Section Corner common to Sections 2, 3, 10, and 11. Marquette County Road Commission records show a post witnessed by: White Pine 12 N13W 40.7'; Spruce 12 West 17.0'.

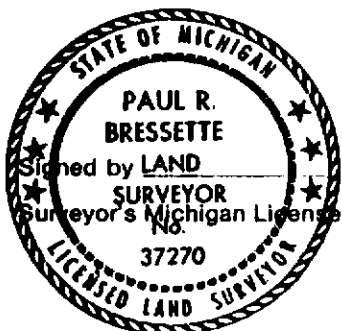
B. Description of corner evidence found and/or method applied in restoring or reestablishing corner:

- G-3 No evidence of original bearing trees or Cummings restoration found. Dave Babbitt, previous DNR Surveyor, also searched for this corner in previous survey and found nothing. Corner position re-established by double proportion from corners one mile north and one-half mile east, west, and south.
H-3 Found hemlock stub with face chopped out. Tree was hollow, but found axe marks deep inside. Position fits calls east and west. Set DNR monument at record bearing and distance from hemlock and witnessed.
I-3 Found rebar with plastic cap by RLS No. 27464 at intersection of ancient fence lines in all four directions. Found a spruce stump in proper position for MCRC NBT. White Pine witness appears to be other MCRC witness. Replaced capped rebar with DNR monument and reblazed present witnesses.

C. Description of monument for corner and accessories established to perpetuate locating the position of the corner:

G-3 DNR monument

Table listing monument details: 5" R. Maple N48E 38.15', 8" Maple N44E 10.1', 8" Y. Birch N48E 15.1', 6" Sugar S04E 6.05', 8" Maple S33E 26.2', 8" Hemlock N84E 4.05', 6" Sugar S88W 12.3', 12" Maple S42W 29.3', 6" Balsam S49W 17.65', 10" Sugar N13W 33.15', 5" Maple N57W 20.0', 21" W. Pine N06W 40.19'



Signature of Paul R. Bressette and Date

37270