

26

MARQUETTE COUNTY
MICHIGAN
RECEIVED FOR RECORD
1993 SEP 30 PM 4:39

Patricia A. Monahan
REGISTER OF DEEDS

LAND CORNER RECORDATION CERTIFICATE
Filing Requirement of Act 74, Mich. P.A. 1970

For corners in

Marquette (County)	Located In:	Corner Code //
1. Public Land Survey	T 45N R 25W	E-2, E-3
	T R	
	T R	
	T R	
2. Property Controlling in Section	S 5 T 45N R 25W	7, 14
	S T R	
3. Miscellaneous Property in Sec.	S T R	
	S T R	

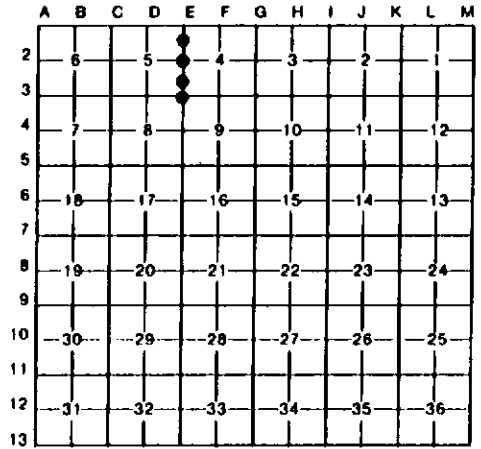
Liber 5 P.C. Page 397

Register of Deeds Stamp & File Number

- 4. Lot No. _____, Recorded Plat
- 5. Private Claims _____

I, Paul R. Bressette, in a field survey on October, 1992, do hereby certify that under requirements of P.A. 74, Michigan P.A. of 1970, the corner points mentioned in lines 1 and 2 above were in conformance with regulations and rules therefore as required in the current manual of survey instructions of the United States Department of the Interior, Bureau of Land Management or by a decree of a Court of Law and/or that the corner points mentioned in lines 3, 4 and 5 above were in conformance with the rules of the Michigan Board of Land Surveyors or by a Decree of a Court of Law; established, re-established, monumented, re-monumented, recovered, found as expressed below:

NOTE: Not more than 4 corners, all in the same town and range, may be recorded on this certificate.



A. Description of original monument and accessories and/or subsequent restoration:

- 2. Quarter corner common to Sections 4 and 5. 1942: Marquette County Road Commission. Set 1" iron pipe and cedar post witnessed by: Cedar 8 S15E 11.6'; Cedar 4 S37W 24.2'.
- 3. Section corner common to Sections 4,5,8 and 9. 1942: Marquette County Road Commission. Set 1" iron pipe and cedar post witnessed by: Black Ash 7 N15W 18.1' and both OBT's.
- 7. North One-sixteenth corner common to Sections 4 and 5. Not set in original survey, no evidence of subsequent establishment.
- 14. South One-sixteenth corner common to Sections 4 and 5. Not set in original survey, no evidence of subsequent establishment.

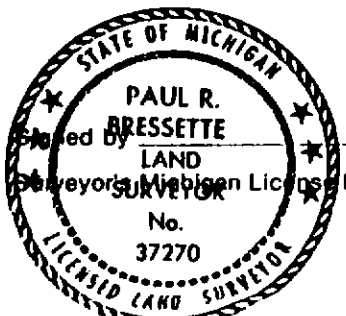
B. Description of corner evidence found and/or method applied in restoring or reestablishing corner:

- 2. Found 1" iron pipe and witnesses as described. Replaced iron pipe with DNR monument and witnessed.
- 3. Found 1" iron pipe, 1 OBT and a red maple NW with butt blaze. Appears to be MCRC witness recorded as black ash. Replaced iron pipe with DNR monument and witnessed.
- 7. Corner position established by single proportionate measure between the Northeast and East Quarter corners of Section 5.
- 14. Corner position established mid-point and on-line between the Southeast and East Quarter corners of Section 5. Corner falls on top of rock knob.

C. Description of monument for corner and accessories established to perpetuate locating the position of the corner:

-2. DNR monument	E-3. DNR monument	7. DNR monument	14. DNR monument
8" Cedar N23E 32.15'	5" B.Ash N67E 14.9'	6" B.Spruce N35E 12.0'	6" Cedar N17E 11.7'
6" B.Ash S63E 12.75'	5" W.Spruce S70E 28.6'	5" Cedar S13E 17.4'	5" R.Maple S18E 15.4'
7" Cedar S42W 24.05'*	12" B.Ash S34W 41.9'	5" Cedar S62W 13.65'	5" R.Maple S46W 41.6'
6" Cedar N60W 37.75'	8" B.Spruce N51W 14.2'	5" Cedar N15W 12.85'	6" Hemlock N38W 4.15'
8" Cedar S10E 11.6'*			

* MCRC witnesses



Paul R. Bressette Date 9-30-93

37270