

MARQUETTE COUNTY
MICHIGAN
RECEIVED FOR RECORD

1993 SEP 30 PM 4: 39

LAND CORNER RECORDATION CERTIFICATE

Filing Requirement of Act 74, Mich. P.A. 1970

Patricia H. Mosley
REGISTER OF DEEDS

For corners in

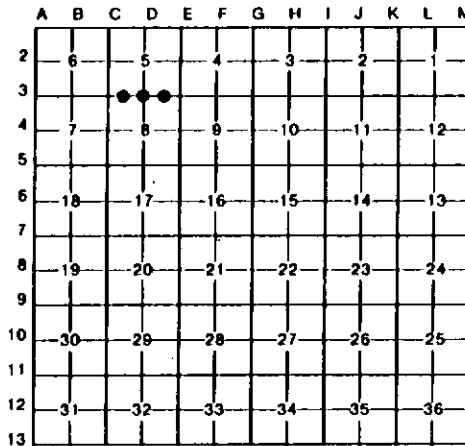
Marquette (County)	Located In:	Corner Code //
1. Public Land Survey	T 45N R 25W	D-3
	T R	
	T R	
	T R	
2. Property Controlling in Section	S 5 T 45N R 25W	15, 16
	S T R	
3. Miscellaneous Property in Sec.	S T R	
	S T R	

Liber 5 R.C. Page 386.

Register of Deeds Stamp & File Number

- 4. Lot No. _____, Recorded Plat _____
- 5. Private Claims _____

I, Paul R. Bressette, in a field survey on July-August, 19 93, do hereby certify that under requirements of P.A. 74, Michigan P.A. of 1970, the corner points mentioned in lines 1 and 2 above were in conformance with regulations and rules therofore as required in the current manual of survey instructions of the United States Department of the Interior, Bureau of Land Management or by a decree of a Court of Law and/or that the corner points mentioned in lines 3, 4 and 5 above were in conformance with the rules of the Michigan Board of Land Surveyors or by a Decree of a Court of Law; established, re-established, monumented, re-monumented, recovered, found as expressed below:



NOTE: Not more than 4 corners, all in the same town and range, may be recorded on this certificate.

A. Description of original monument and accessories and/or subsequent restoration:

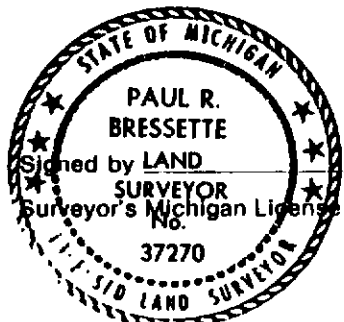
- D-3. Quarter corner common to Sections 5 and 8. 1854: Martin M. Hall, D.S. Set wood post witnessed by: Hemlock 16 S44W 16 links; Hemlock 30 N73E 15 links.
- 15. West One-sixteenth corner common to Sections 5 and 8. Not set in original survey, no evidence of subsequent establishment.
- 16. East One-sixteenth corner common to Sections 5 and 8. Not set in original survey, no evidence of subsequent establishment.

B. Description of corner evidence found and/or method applied in restoring or reestablishing corner:

- D-3. No evidence of original survey or restoration found. Corner position re-established mid-point and on-line between the Southeast and Southwest corners of Section 5. Terrain calls along the line fit very well for the whole mile. Corner falls in small valley with rock knobs N, S, E and W.
- 15. Corner position established mid-point and on-line between the Southwest and South Quarter corners of Section 5.
- 16. Corner position established mid-point and on-line between the Southeast and South Quarter corners of Section 5.

C. Description of monument for corner and accessories established to perpetuate locating the position of the corner:

D-3. DNR monument	15. DNR monument	16. DNR monument
8" R. Maple N60E 36.25'	"X" on rock N74E 18.65'	8" W. Spruce N77E 26.55'
7" R. Maple S41E 7.45'	5" W. Birch S24E 19.0'	10" Sugar S50E 31.15'
6" R. Maple S34W 25.45'	8" B. Spruce N89W 36.55'	6" Sugar S57W 28.3'
8" R. Maple N74W 34.6'	7" B. Spruce N29W 40.75'	10" R. Maple N52W 18.15'



Paul R. Bressette Date 9-30-93
 Surveyor's Michigan License No. 37270