

MARQUETTE COUNTY MICHIGAN RECEIVED FOR RECORD

1993 SEP 30 PM 4:39

LAND CORNER RECORDATION CERTIFICATE Filing Requirement of Act 74, Mich. P.A. 1970

Patricia L. Henley REGISTER OF DEEDS

For corners in

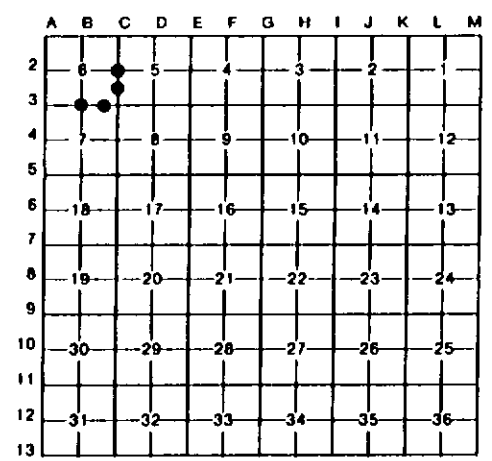
Table with columns: Marguette (County), Located In, Corner Code. Rows include Public Land Survey, Property Controlling in Section, and Miscellaneous Property in Sec.

Liber 5 RC. Page 384

Register of Deeds Stamp & File Number

- 4. Lot No. Recorded Plat
5. Private Claims

I, Paul R. Bressette, in a field survey on July-August, 1993 do hereby certify that under requirements of P.A. 74, Michigan P.A. of 1970, the corner points mentioned in lines 1 and 2 above were in conformance with regulations and rules therefore as required in the current manual of survey instructions of the United States Department of the Interior, Bureau of Land Management or by a decree of a Court of Law and/or that the corner points mentioned in lines 3, 4 and 5 above were in conformance with the rules of the Michigan Board of Land Surveyors or by a Decree of a Court of Law; established, re-established, monumented, re-monumented, recovered, found as expressed below:



NOTE: Not more than 4 corners, all in the same town and range, may be recorded on this certificate.

A. Description of original monument and accessories and/or subsequent restoration:

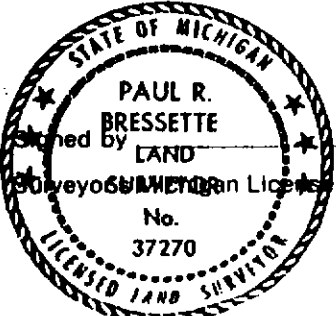
- 3. Quarter corner common to Sections 6 and 7. Found 1" drill rod and two witnesses not of record
2. Quarter corner common to Sections 5 and 6. 1854: Martin M. Hall, D.S. Set wood post witnessed by: Maple 11 S52E 53 links; Maple 15 N12E 20 links.
14. South One-sixteenth corner common to Sections 5 and 6. Not set in original survey, no evidence of subsequent establishment.
16. East One-sixteenth corner common to Sections 6 and 7. Not set in original survey, no evidence of subsequent establishment.

B. Description of corner evidence found and/or method applied in restoring or reestablishing corner:

- 3. Accepted the drill rod after checking distances to terrain calls east and west. Replaced the drill rod with DNR monument and witnessed. Set drill rod next to monument as guard post.
2. No evidence of original survey or restoration found. Corner re-established by single proportionate measure between the Northwest and Southwest corners of Section 5.
14. Corner position established mid-point and on-line between the Southeast and East Quarter corners of Section 6. Corner falls on top of a rock ledge and was placed in a mound of stone 2 feet high and 3 feet in diameter, and is 40 feet east of a 6' x 6' x 8' high boulder.
16. Corner position established mid-point and on-line between the Southeast and South Quarter corners of Section 6. Corner falls on east edge of rock ledge and was placed in a mound of stones. Fits a terrain call "top of ledge" which was very close to mid-point in the original survey.

C. Description of monument for corner and accessories established to perpetuate locating the position of the corner:

- 3. DNR monument C-2. DNR monument 14. DNR monument 16. DNR monument
10" W.Pine N74E 23.4' 6" Y.Birch N76E 12.3' 5" B.Spruce N34E 13.45' 8"R.Maple N23E 31.85'
4" W.Pine S29E 9.6' 10" R.Maple S41E 5.45' 6" B.Spruce S65E 14.05' 16"W.Pine S26E 23.75'
4" R.Maple S60W 10.35' 6" W.Spruce S11W 4.85' 5" B.Spruce S48W 12.65' 10"W.Pine S54W 39.45'
9" J.Pine N32W 7.3' 6" R.Maple N81W 25.65' 5" B.Spruce N23W 23.05' 10"R.Maple N60W 15.15'



Signed by Paul R. Bressette Date 9-30-93

Surveyor's License No. 37270