

**SURVEY &
REMONUMENTATION**

APR 28 1995 **LAND CORNER RECORDATION CERTIFICATE**
Filing Requirement of Act 74, Mich. P.A. 1970

MARQUETTE COUNTY
MICHIGAN
RECEIVED FOR RECORD

1994 DEC 29 PM 1:55

COMMISSION

For corners in

Marquette

(County)

Located In:

Corner Code #

1. Public Land Survey	T	45N	R	25W	K-3
	T		R		
	T		R		
	T		R		
2. Property Controlling in Section	S	T	R		
	S	T	R		
3. Miscellaneous Property in Sec.	S	T	R		
	S	T	R		

**RATIFIED BY PEER GROUP
P.A. 345 OF 1990**

Larry J. Busone

DATE Sept 12, 1994

Patricia A. Hanley
REGISTER OF DEEDS

LIBER **1** PAGE **215**
Register of Deeds Stamp & File Number

4. Lot No. _____, Recorded Plat _____
5. Private Claims _____

Michael Mileski

September 94

in a field survey on _____, 19____

I do hereby certify that under requirements of P.A. 74, Michigan P.A. of 1970, the corner points mentioned in lines 1 and 2 above were in conformance with regulations and rules therefore as required in the current manual of survey instructions of the United States Department of the Interior, Bureau of Land Management or by a decree of a Court of Law and/or that the corner points mentioned in lines 3, 4 and 5 above were in conformance with the rules of the Michigan Board of Land Surveyors or by a Decree of a Court of Law; established, re-established, monumented, re-monumented, recovered, found as expressed below:

NOTE: Not more than 4 corners, all in the same town and range, may be recorded on this certificate.

Description of original monument and accessories and/or subsequent restoration:

K-3; Southeast Corner Section 2;

See back of form.

Description of corner evidence found and/or method applied in restoring or reestablishing corner:

K-3; Southeast Corner Section 2;

Found Mr. Kazianka's iron pipe with aluminum cap at the south edge of an east-west trail road and in agreement with the M.C.R.C.'s southeast new bearing tree which is presently alive (13" dia.) with the lower face blaze and scribing evident.

State Plane Coordinates:

Grid System - NAD 83

Zone Number - 2111 Michigan North

Units - International Feet

Y = 559982.97638

X = 26148970.67505

Description of monument for corner and accessories established to perpetuate locating the position of the corner:

K-3; Southeast Corner Section 2;

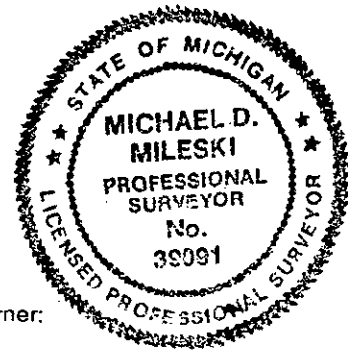
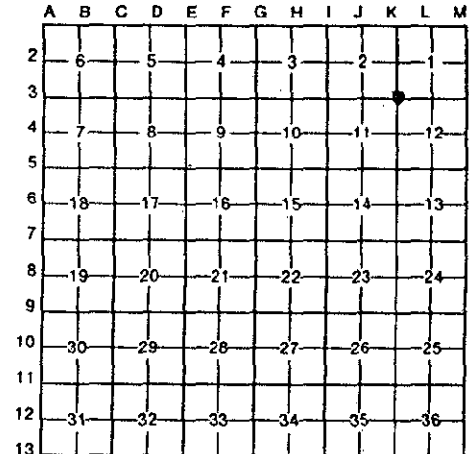
Left Mr. Kazianka's previously described monument in place.

Set 60d spike	N/side	19" Jack Pine	N42°E	62.77'	(Kazianka NBT)
Set 60d spike	W/side	13" Jack Pine	S13°E	99.99'	(Kazianka NBT)
Set 60d spike	SE/side	7" Jack Pine	S43°W	64.66'	(upper & lower blazes, mkd. "NBT")
Set 60d spike	W/side	16" Jack Pine	N11°W	82.17'	(Kazianka NBT)
		Location Post South		1.5'	

Recorded by *Michael Mileski*

Date 21 Nov 1994

Surveyor's Michigan License No. 39091



Handwritten:
6476
Geo
Ben

A. Description of original monument and accessories and/or subsequent restoration:

K-3; Southeast Corner Section 2;

Originally established during U.S. Survey conducted by Martin Hall, D.S. in 1852 and monumented with a spruce post witnessed by a Spruce Pine 10 N57°W 19 lks. and a Spruce Pine 10 S51°E 10 lks.

This corner was remonumented with a 1" iron pipe and jack pine post on 29 April 1942 by the Marquette County Road Commission at a position intended to be on line between the one-quarter common to section 11 and 12 and the northeast corner of section 2 at a distance of 2640.0 feet (U.S. - 39.86 chains) from the one-quarter corner common to sections 11 and 12. At the one-quarter corner common to sections 11 and 12 the M.C.R.C. found and accepted an "iron pipe and old post".

The northeast corner of section 2 was remonumented by the M.C.R.C. on 15 December 1941 and intended to be at proportionate distance between the south one-quarter corner of section 36 and the southwest corner of section 34. Refer to M.C.R.C. field book 712 pages 9, 18, and 27.

The M.C.R.C. noted the following new bearing trees:

- 8" Jack Pine S12°E 99.9'
- 10" Jack Pine S78°W 201.2'

Per entry in M.C.R.C. field book 643 this corner was remonumented on 15 November 1968 by Edward Kazianka, P.S. #14765 for Kimberly-Clark Corp. with a 1" iron pipe 36 inches in length and with a 4" aluminum cap.

Mr. Kazianka noted the following new bearing trees:

- 13" Jack Pine N43°E 94½ lks.
- 13" Jack Pine N10°W 124½ lks.
- 13" Jack Pine S79°W 304½ lks.
- 11" Jack Pine S11°E 151½ lks.