

MICHIGAN  
DEPARTMENT OF CONSERVATION  
FORESTRY DIVISION

LAND CORNER RECORD

T. 45N N.R. 27W

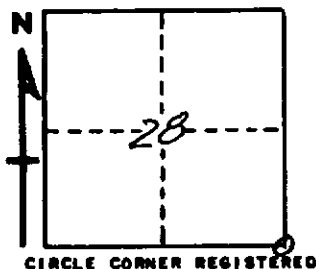
Marquette COUNTY

DESCRIPTION OF CORNER Sec. Cor. common to Secs. 27-28-33-34

CORNER MONUMENT 1" pipe with 4" aluminum cap.

DATE MONUMENT PLACED AND WITNESSED 8/15/66

WITNESSES TO CORNER..... 8" B. Spruce (S28 NBT) N68°W 15.9'



7" B. Spruce (S27 NBT) N35°E 6.4'

7" B. Spruce (S34 NBT) S19°E 12.6'

AND

DESCRIPTION IN DETAIL AS TO HOW CORNER WAS LOCATED AND IDENTIFIED OR RESTORED.

This corner replaced from one 18" jack pine stump bottom, bearing N78°E 09 lks. No other large stumps in vicinity. This position is 2 links west of a point determined by double proportionate measure from corners one mile in all four directions.

Corner lies 1/2 chs. south of a swamp.

SURVEYOR'S SEAL

SIGNED Billy D. Buckler  
Billy D. Buckler  
REGISTERED LAND SURVEYOR

DATE 1/10/67