

✓

**MICHIGAN
DEPARTMENT OF CONSERVATION
FORESTRY DIVISION**

LAND CORNER RECORD

T. 45N N.R. 27W

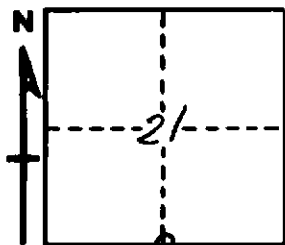
Marquette COUNTY

DESCRIPTION OF CORNER ¼ cor. bet. Secs. 21-28

CORNER MONUMENT 1" pipe with 4" aluminum cap.

DATE MONUMENT PLACED AND WITNESSED 8/3/66

WITNESSES TO CORNER..... 9" B. Spruce (½ S NBT) S20°E 8.4'



8" W. Birch (½ S NBT) N55°W 13.3'

AND

CIRCLE CORNER REGISTERED

DESCRIPTION IN DETAIL AS TO HOW CORNER WAS LOCATED AND IDENTIFIED OR RESTORED.

This corner replaced from one W. Pine Bit.; S 55°E 21 lks., a rotted stump with part of face, notch and some scribe marks; and one Jack Pine stump, badly rotted, bearing N26°W 15 lks.

No evidence of use at corner.

Cor. lies on East end of knoll and 1 ch. north of swamp.

Cor. lies 1.03 chs. N. and 36 lks. W. of 40.35 chs. (Alatalo's ch.) fr. W.

SURVEYOR'S SEAL

SIGNED Billy D. Buckler DATE 1/9/67
REGISTERED LAND SURVEYOR