

MICHIGAN  
DEPARTMENT OF CONSERVATION  
FORESTRY DIVISION

LAND CORNER RECORD

T. 45N N.R. 27W

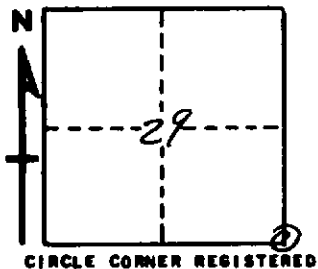
Marquette COUNTY

DESCRIPTION OF CORNER Sec. Cor. common to Secs. 28-29-32-33

CORNER MONUMENT 1" pipe with 4" aluminum cap.

DATE MONUMENT PLACED AND WITNESSED 8/3/66

WITNESSES TO CORNER..... 12" Elm (S33 NBT) S 24°E 25.2'



11" W. Birch (S28 NBT) N 80°E 36.6'

AND

DESCRIPTION IN DETAIL AS TO HOW CORNER WAS LOCATED AND IDENTIFIED OR RESTORED.

This corner replaced at 1½" iron pipe set by unknown surveyor. Location used as Section Cor. by adjacent owners for several years.

Distance to streams, east and north check well.

SURVEYOR'S SEAL

SIGNED *Billy D. Buckler*  
BILLY D. BUCKLER  
REGISTERED LAND SURVEYOR

DATE 1/9/67