

MICHIGAN  
DEPARTMENT OF CONSERVATION  
FORESTRY DIVISION

LAND CORNER RECORD

T. 45N N. R. 27W

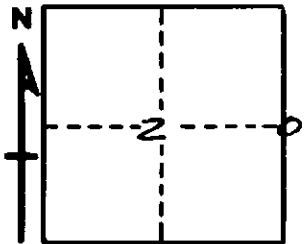
Marquette COUNTY

DESCRIPTION OF CORNER 1/4 Corner bet. Secs. 1-2

CORNER MONUMENT 1" pipe with 4" aluminum cap.

DATE MONUMENT PLACED AND WITNESSED 9/12/66

WITNESSES TO CORNER..... 10" Red Oak (1/2 S NBT) S25°W 23.0'



7" Red Oak (1/2 S NBT) N49°W 9.7'

AND

CIRCLE CORNER REGISTERED

DESCRIPTION IN DETAIL AS TO HOW CORNER WAS LOCATED AND IDENTIFIED OR RESTORED.

This corner replaced from remains of a red pine stump bearing N30°E 40 lks. Position checks with sec. cor. to south, 1/2 mile.

Cor. lies on top of hill, 5.00 chs. north of an open marsh and 3.00 chs. south of a woods road.

SURVEYOR'S SEAL

SIGNED Billy D. Buckler DATE 1/11/67  
REGISTERED LAND SURVEYOR