

MICHIGAN
DEPARTMENT OF CONSERVATION
FORESTRY DIVISION

LAND CORNER RECORD

T. 45N N.R. 27W

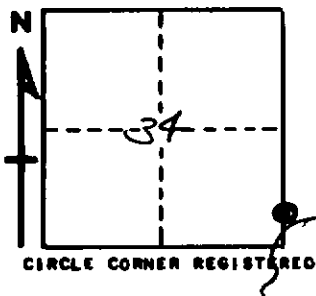
Marquette COUNTY

DESCRIPTION OF CORNER Meander corner bet. Secs. 34-35 on north side of Kates Lake

CORNER MONUMENT 1" pipe with 4" aluminum cap.

DATE MONUMENT PLACED AND WITNESSED 9/15/66

WITNESSES TO CORNER..... 14" W. Pine (M.C. NBT) S13°W 51.8'



8" B. Spruce (M.C. NBT) N24°E 54.5'

AND

DESCRIPTION IN DETAIL AS TO HOW CORNER WAS LOCATED AND IDENTIFIED OR RESTORED.

This corner re-established on line bet. two sec. cors. and on north shore of lake. Found no evidence of original corner, apparently removed by water erosion.

SURVEYOR'S SEAL

SIGNED Billy D. Buckler DATE 1/11/67
REGISTERED LAND SURVEYOR