

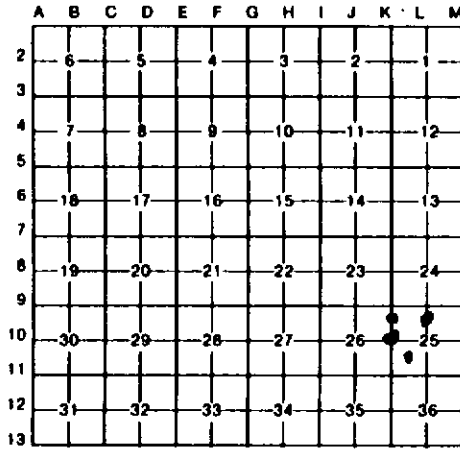
**LAND CORNER RECORDATION CERTIFICATE**  
**Filing Requirement of Act 74, Mich. P.A. 1970**

For corners in

<b>T</b>	<b>Marquette</b>	Located In:	Corner Code <b>11</b>
	(County)		
1. Public Land Survey	T 45M R 27W		K10
	T R		
	T R		
	T R		
2. Property Controlling in Section	S 25 T R		3
	S T R		5
3. Miscellaneous Property in Sec.	S T R		11
	S T R		

Register of Deeds Stamp & File Number

4. Lot No. \_\_\_\_\_, Recorded Plat \_\_\_\_\_  
 5. Private Claims \_\_\_\_\_



I, **Keith Sackett**, in a field survey on **December 28**, 19**90**, do hereby certify that under requirements of P.A. 74, Michigan P.A. of 1970, the corner points mentioned in lines 1 and 2 above were in conformance with regulations and rules therefore as required in the current manual of survey instructions of the United States Department of the Interior, Bureau of Land Management or by a decree of a Court of Law and/or that the corner points mentioned in lines 3, 4 and 5 above were in conformance with the rules of the Michigan Board of Land Surveyors or by a Decree of a Court of Law; established, re-established, monumented, re-monumented, recovered, found as expressed below:

**NOTE: Not more than 4 corners, all in the same town and range, may be recorded on this certificate.**

A. Description of original monument and accessories and/or subsequent restoration:

<b>K10</b>	<b>3</b>	<b>5</b>	<b>11</b>
Found corner monument as set by Billy D. Buckler R.L.S.	Found corner monument as set by Bill D. Buckler.	Not set on original survey nor subsequently, apparently.	Not set on original survey nor subsequently, apparently.

B. Description of corner evidence found and/or method applied in restoring or reestablishing corner:

<b>K10</b>	<b>3</b>	<b>5</b>	<b>11</b>
Restored at B. D. Buckler monument.	Restored at B. D. Buckler monument.	Established during section subdivision.	Established during section subdivision.

C. Description of monument for corner and accessories established to perpetuate locating the position of the corner:

<b>K10</b>	<b>3</b>	<b>5</b>	<b>11</b>
Restored corner at Buckler monument 14" spruce S35W 35.9' 1/4s, NBT 3" aspen S15E 3.8' 1/4s, NBT 3" aspen N24W 13.8' 1/4s, NBT	Restored corner at Buckler monument 8" maple N70W 25.8' 1/16s, NBT 7" maple S62W 56.7' 1/16s, NBT 14" spruce N80E 76.2' 1/16s, NBT	Set 1" I.D. x 36" iron pipe with 4" aluminum cap. 14" spruce S45E 21.9' 1/16s, BT 6" maple N40E 34.6' 1/16s, BT 6" balsam N76W 40.0' 1/16s, BT	Set 1" I.D. x 36" iron pipe with 4" aluminum cap. 8" white pine S40W 27.1' 1/16s, BT 12" white pine S75E 47.5' 1/16s, BT 6" oak N80E 33.5' 1/16s, BT

Signed by *Keith Sackett* Date January 16, 1991

Surveyor's Michigan License No. 19006