

**LAND CORNER RECORDATION CERTIFICATE**  
**Filing Requirement of Act 74, Mich. P.A. 1970**

For corners in  
**7 Marquette**

(County)

Located In:

Corner Code *≠#*

1. Public Land Survey		T 45N	R 28W	E4
		T	R	E5
		T	R	G3
		T	R	
2. Property Controlling in Section	S 8	T	R	14
	S	T	R	
3. Miscellaneous Property in Sec.	S	T	R	
	S	T	R	

Register of Deeds Stamp & File Number

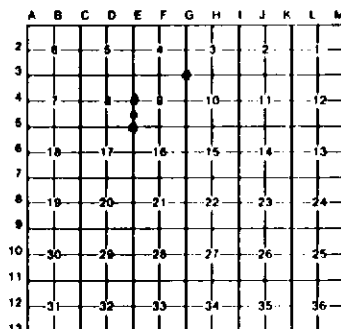
4. Lot No. \_\_\_\_\_, Recorded Plat \_\_\_\_\_  
 5. Private Claims \_\_\_\_\_

I, **Keith Sackett**, in a field survey on **March 12**, 19 **90**, do hereby certify that under requirements of P.A. 74, Michigan P.A. of 1970, the corner points mentioned in lines 1 and 2 above were in conformance with regulations and rules theretofore as required in the current manual of survey instructions of the United States Department of the Interior, Bureau of Land Management or by a decree of a Court of Law and/or that the corner points mentioned in lines 3, 4 and 5 above were in conformance with the rules of the Michigan Board of Land Surveyors or by a Decree of a Court of Law, established, re-established, monumented, re-monumented, recovered, found as expressed below:

**NOTE: Not more than 4 corners, all in the same town and range, may be recorded on this certificate.**

A Description of original monument and accessories and/or subsequent restoration:

E4	E5	G3	14
Found 1" ID x 18" out of ground iron pipe.	Found 1/2" iron pin.	Found 3/8" rebar.	Found 1/2" ID x 6" out of ground iron pin.



B Description of corner evidence found and/or method applied in restoring or reestablishing corner:

E4	E5	G3	14
Restored at 1" ID x 18" out of ground iron pipe.	Restored at 1/2" iron pin.	Restored at 3/8" rebar.	Established at 1/2" ID x 6" out of ground iron pin.

C Description of monument for corner and accessories established to perpetuate locating the position of the corner:

E4	E5	G3	14
1" ID x 18" out of ground iron pipe.	1/2" iron pin.	3/8" rebar.	1/2" ID x 6" out of ground iron pin.
10" j. pine S64W 8.8' 1/4s, NBT	5" j. pine S15E 10.6' s16, NBT	14" j. pine N33E 30.8' s3, NBT	14" pine stump nail in side of stump S69E 11.85'
7" j. pine N32E 12.2' 1/4s, NBT	5" j. pine N42E 5.7' s9, NBT	7" j. pine N15W 22.6' s4, NBT	14" j. pine S30W 58.8' 1/16s, BT
4" j. pine S74E 17.7' 1/4s, NBT	5" j. pine N28W 9.6' s8, NBT	14" j. pine S34W 31.5' s7, NBT	5" aspen N40E 5.7' 1/16s, BT

Signed by Keith Sackett Date August 27, 1990

Surveyor's Michigan License No. 19006

FORM APPROVED BY MICHIGAN STATE BOARD OF LAND SURVEYORS, JAN. 28, 1971  
 REVISED MAY 14, 1975  
 REVISED JAN., 1983