

MARQUETTE COUNTY  
MICHIGAN  
RECEIVED FOR RECORD

LAND CORNER RECORDATION CERTIFICATE 1993 AUG 26 PM 3:02  
Filing Requirement of Act 74, Mich. P.A. 1970

For corners in  
Marquette (County) Located In: Corner Code -11

1. Public Land Survey T 45N R 28W F-1  
 T R  
 T R  
 T R

2. Property Controlling S 4 T 45N R 28W 1  
 in Section S 4 T 45N R 28W 2

3. Miscellaneous S T R  
 Property in Sec. S T R

4. Lot No. \_\_\_\_\_, Recorded Plat \_\_\_\_\_

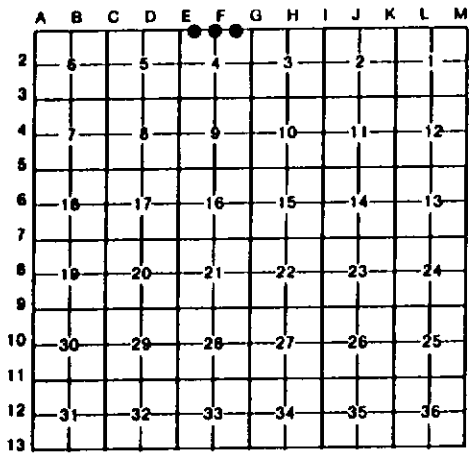
5. Private Claims \_\_\_\_\_

*Richard L. Andrews*  
REGISTER OF DEEDS *J.L.*

Liber 5 R.C. Page 378

Register of Deeds Stamp & File Number

I, Paul Bressette, in a field survey on May 5, 1993  
 do hereby certify that under requirements of P.A. 74, Michigan P.A. of 1970, the corner points mentioned  
 in lines 1 and 2 above were in conformance with regulations and rules therefore as required in the  
 current manual of survey instructions of the United States Department of the Interior, Bureau of Land  
 Management or by a decree of a Court of Law and/or that the corner points mentioned in lines 3, 4 and 5  
 above were in conformance with the rules of the Michigan Board of Land Surveyors or by a Decree of a  
 Court of Law; established, re-established, monumented, re-monumented, recovered, found as  
 expressed below:



NOTE: Not more than 4 corners, all in the same town and range, may be recorded on this certificate.

A. Description of original monument and accessories and/or subsequent restoration:

F-1 Quarter corner common to Sections 4 and 33. 1846: Austin Burt, D.S. set wood post witnessed by S. Pine 8 N 60-1/2 E 36 S. Pine 7 N 44-1/2 W 43

1 West one-sixteenth corner common to Sections 4 and 33. Not established in original survey. No evidence of subsequent establishment.

2 East one-sixteenth corner common to Sections 4 and 33. Not established in original survey. Found 2" iron pipe NE of monumented location.

B. Description of corner evidence found and/or method applied in restoring or reestablishing corner:

F-1 Found no evidence of original monument or witnesses. Found and rejected a 1" iron pin N 77-1/2 W 27.21' from monumented position that is not of record. The iron pin would make the east half mile extremely long and the west half mile short, and would not fit a terrain call to "Leave Marsh C.SW" at 20.0 chains. Corner position re-established mid-point and on-line between the Northeast and Northwest Corners of S.4. Iron pin has since been removed by unknown person.

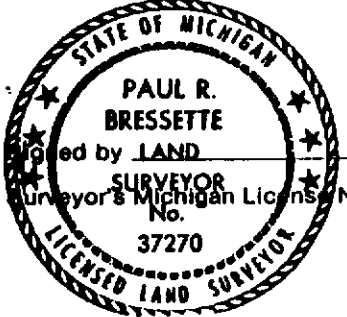
1 Corner established mid-point and on-line between the Northwest and North quarter corners of Section 4.

2 Corner established mid-point and on-line between the Northeast and North quarter corners of Section 4.

C. Description of monument for corner and accessories established to perpetuate locating the position of the corner:

F-1	DNR Mon.	1	DNR Mon.	2	DNR Mon.					
N.	5" J. Pine	N07°E	21.4'	N.	4" Aspen North	22.05'	10" J. Pine	N39°E	69.9'	
B.	9" J. Pine	N77°E	21.2'	B.	8" J. Pine	S76°E	44.65'	8" B. Spruce	S47°E	20.65'
T.	8" J. Pine	S30°E	33.8'	T.	4" Aspen	S10°W	18.65'	9" J. Pine	S15°W	27.25'
S.	5" R. Pine	N34°W	27.75'	S.	4" Aspen	N50°W	27.65'	*10" J. Pine	N75°W	39.04'

\*Pk w/shiner in root, no blazes



*Paul R. Bressette* Date 8-25-93

SEP 2 1993