

MICHIGAN
DEPARTMENT OF CONSERVATION
FORESTRY DIVISION



LAND CORNER RECORD

T. 44-45 N.R. 30W

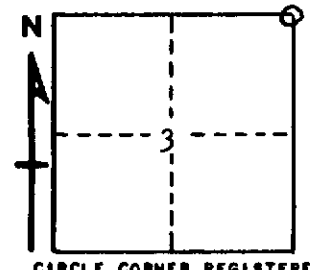
Marquette-Dickinson COUNTY

DESCRIPTION OF CORNER Sec. Cor. 2, 3, 34, & 35

CORNER MONUMENT 1" I.D. x 36" iron pipe with 4" aluminum cap

DATE MONUMENT PLACED AND WITNESSED July 29, 1968

WITNESSES TO CORNER..... Tamarack 14 N3 $\frac{1}{2}$ W 167 lks. "894, NBT"



Black Spruce 5 S73 $\frac{1}{2}$ W 154 $\frac{1}{2}$ lks. "83, NBT"

Red Pine 12 S13E 249 lks. "S13, NBT"

AND

DESCRIPTION IN DETAIL AS TO HOW CORNER WAS LOCATED AND IDENTIFIED OR RESTORED.

Corner set on line between $\frac{1}{2}$ cor. bet. Sec. 1 & 36, T44-45N, R30W and Sec. Cor. 4, 5, 32, & 33, T44-45N, R30W, 120.00 chains West of first above named corner and 161.01 chains East of last above named corner. The position checks fairly well with natural features called for in original field notes, but some of the nearer features mentioned are now obliterated by beaver floodings. In the absence of contrary evidence, corner was placed at record distance West from first above named corner, an original corner.

No evidence of original corner or accessories, but rough chainage marker set by unknown party is in general vicinity.

Corner is in an open, wet, grassy marsh on west side of east arm of a large beaver pond.

SURVEYOR'S SEAL

SIGNED Arthur O. Enger DATE 1/2/69
REGISTERED LAND SURVEYOR