

MICHIGAN
DEPARTMENT OF CONSERVATION
FORESTRY DIVISION



LAND CORNER RECORD

T. 46-45 N.R. 30W

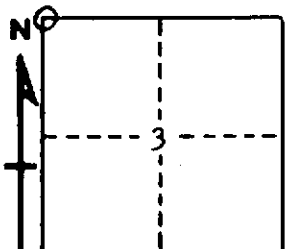
Marquette-Dickinson COUNTY

DESCRIPTION OF CORNER Sec. Cor. 3, 4, 33, & 34

CORNER MONUMENT 1" I.D. x 36" iron pipe with 4" aluminum cap

DATE MONUMENT PLACED AND WITNESSED July 26, 1968

WITNESSES TO CORNER..... Tamarack 15 S56W 55 1/2 lks. "S4, NBT"



White Pine 15 S80W 76 1/2 lks. "S4, NBT"

White Pine 20 N56W 118 1/2 lks. "S33, NBT"

AND

CIRCLE CORNER REGISTERED

DESCRIPTION IN DETAIL AS TO HOW CORNER WAS LOCATED AND IDENTIFIED OR RESTORED.

Corner set on line between nearest identified corners 80.51 chains West and 200.50 chains E. Comparison of measured distances to natural features called for in original field notes makes it appear that the distance across the north side of Sec. 3 is 80.50 chains and across the north side of Sec. 4, 80.51 chains. Position in which this corner was placed shows substantial agreement with field note calls to a small stream to east, north, and west, and to a ridge top south.

No evidence of original corner or accessories.

SURVEYOR'S SEAL

SIGNED Arthur O. Enger DATE 1/2/69
REGISTERED LAND SURVEYOR