

MICHIGAN
DEPARTMENT OF CONSERVATION
FORESTRY DIVISION



LAND CORNER RECORD

T. 44-45 N.R. 30 W

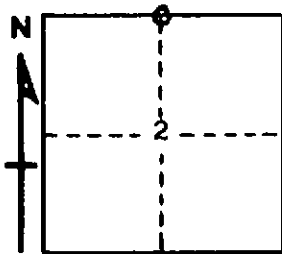
Marquette-Dickinson COUNTY

DESCRIPTION OF CORNER 1/4 corner between Sec. 2 & 35

CORNER MONUMENT 1" I.D. by 36" iron pipe with 4" aluminum cap

DATE MONUMENT PLACED AND WITNESSED 7/29/68

WITNESSES TO CORNER..... White Pine 10 S27 1/2 W 101 lks. "1/4 S NBT"



White Pine 12 N59 1/2 E 87 1/2 lks. "1/4 S NBT"

AND

CIRCLE CORNER REGISTERED

DESCRIPTION IN DETAIL AS TO HOW CORNER WAS LOCATED AND IDENTIFIED OR RESTORED.

Corner was replaced midway on line between Sec. Corners 40.00 chains to east and west, previously established by proportionate measurement.

No evidence of original corner, but corner is on a 50 ft. high ridge N & S as per original field notes. Distance west to stream is 5.10 chains, recorded distance was 5.55 chains.

SURVEYOR'S SEAL

SIGNED Arthur O. Enger DATE 9/4/68
REGISTERED LAND SURVEYOR