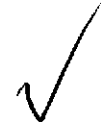


MICHIGAN
DEPARTMENT OF CONSERVATION
FORESTRY DIVISION



LAND CORNER RECORD

T. 44-45 N.R. 30 W

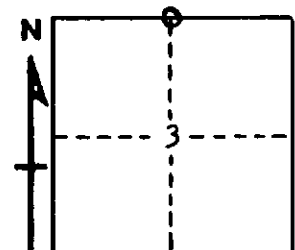
Marquette-Dickinson COUNTY

DESCRIPTION OF CORNER 1/4 corner between Sec. 3 & 34

CORNER MONUMENT 1" I.D. by 36" iron pipe with 4" aluminum cap

DATE MONUMENT PLACED AND WITNESSED August 2, 1968

WITNESSES TO CORNER..... White pine 12 N77W 68 lks. "1/4 S MBT"



White pine 10 S29W 47 lks. "1/4 S MBT"

AND

CIRCLE CORNER REGISTERED

DESCRIPTION IN DETAIL AS TO HOW CORNER WAS LOCATED AND IDENTIFIED OR RESTORED.

This corner was replaced midway on line between Sec. Corners 40.25 chains to east and west, which had been previously set by proportionate measurements on a line between 1/4 cor. on N. side of Sec. 1, T44N, R30W and the NW cor. of Sec. 4, T44N, R30W.

Distance from this corner to swamp edge to east is 2.00 chains and to ridge top to west is 3.00 chains, as called for in original field notes. No original evidence of corner.

SURVEYOR'S SEAL

SIGNED Arthur O. Enger DATE 9/4/68
REGISTERED LAND SURVEYOR