

LAND CORNER RECORDATION CERTIFICATE
Filing Requirement of Act 74, Mich. P.A. 1970

For corners in Marquette <small>(County)</small>	Located In:	Corner Code #
1. Public Land Survey	T 45N R 30W	65
	T R	
	T R	
	T R	
2. Property Controlling in Section	S 10 T 45N R 30W	2
	S T R	
3. Miscellaneous Property in Sec.	S T R	
	S T R	

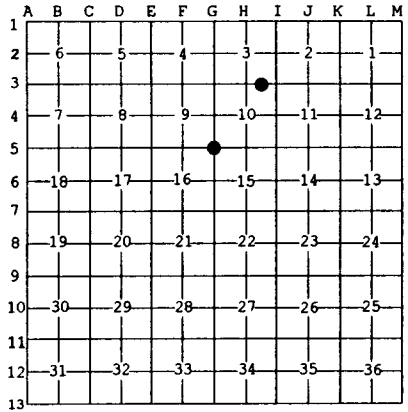
Register of Deeds Stamp & File Number

4. Lot No. _____, Recorded Plat _____
 5. Private Claims _____

2 Oct 15 2001
 65 Sep 27 2001

I, Stephan J. Szyszkoski, in a field survey on _____, 19____ do hereby state that under requirements of P.A. 74, Michigan P.A. of 1970, the corner points mentioned in lines 1 and 2 above were in conformance with regulations and rules therefore as required in the current manual of survey instructions of the United States Department of the Interior, Bureau of Land Management or by a decree of a Court of Law and/or that the corner points mentioned in lines 3, 4 and 5 above were in conformance with the rules of the Michigan Board of Land Surveyors or by a Decree of a Court of Law; established, re-established, monumented, recovered, found as expressed below:

NOTE: Not more than 2 corners, all in the same town and range, may be recorded on this certificate.



A. Description of original monument and accessories and/or subsequent restoration:
 (65) Corner common to Sections 9-10-15-16. 1848: Established by Wells Burt. Set Cedar post. Sugar 16 N2W 21, Cedar 16 S21E 27. Found no subsequent record.
 (2-Sec. 10) East 1/16 corner between Sections 3 and 10. Not established in the original survey.

B. Description of corner evidence found and/or method applied in restoring or reestablishing corner:

(65) The original post and accessories were not recovered. Found a 1" ID iron pipe capped with a 3.5" dia. brass cap stamped "The Mead Corp. 9-10-15-16 T45N R30W 1975 RLS 8317". Several trees with old blazes face the corner, including an 11" sugar with a blaze scar approx. 50 years old. Accepted the monument as the best available evidence of the position of the corner.
 (2-Sec. 10) Established the corner midway and on a line of mean true bearing between quarter corner 1327.05' West and section corner 1327.05' East. An E-W blue paint line is approx. 15' south of the monument.

C. Description of monument for corner and accessories established to perpetuate locating the position of the corner:

(65) Found 1" ID IP with Mead Corp. brass cap. Found the following trees with overgrown blazes:	(2) Set 1" ID x 32" I. Pipe with 4" alum. MDNR cap. Blazed and scribed:
7" Sugar S70E 10.6' to center of tree	8" Maple N23E 17.8' "1/16S BT"
8" Sugar S12W 24.9' do	8" Maple S30E 28.3' do
10" Sugar N69W 12.8' do	5" Sugar S27W 16.0' do
	9" Maple N18W 38.7' do
Blazed and scribed the following:	Set sq'd cedar post adjacent. Bearings
11" Sugar N03E 23.9' "S9 NBT"	are magnetic. Distances to notch in
Distance to notch in lower blaze.	lower blaze.
Bearings are magnetic. Var. 20 deg. West.	



Signed by Stephan J. Szyszkoski Date 2/4/02
 Surveyor's Michigan License No. 33986

For the Michigan Department of Natural Resources - Office of Property Management