

LAND CORNER RECORDATION CERTIFICATE
Filing Requirement of Act 74, Mich. P.A. 1970

For corners in

Marquette <small>(County)</small>	Located In:	Corner Code #
1. Public Land Survey	T 45N R 30W	I4
	T 45N R 30W	H5
	T R	
	T R	
2. Property Controlling in Section	S T R	
	S T R	
3. Miscellaneous Property in Sec.	S T R	
	S T R	

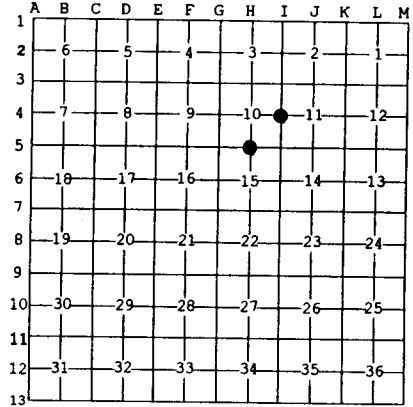
Register of Deeds Stamp & File Number

4. Lot No. _____, Recorded Plat _____
 5. Private Claims _____

Oct 16 2001

I, Stephan J. Szyszkoski, in a field survey on _____, 19____ do hereby state that under requirements of P.A. 74, Michigan P.A. of 1970, the corner points mentioned in lines 1 and 2 above were in conformance with regulations and rules therefore as required in the current manual of survey instructions of the United States Department of the Interior, Bureau of Land Management or by a decree of a Court of Law and /or that the corner points mentioned in lines 3, 4 and 5 above were in conformance with the rules of the Michigan Board of Land Surveyors or by a Decree of a Court of Law; established, re-established, monumented, recovered, found as expressed below.

NOTE: Not more than 2 corners, all in the same town and range, may be recorded on this certificate.



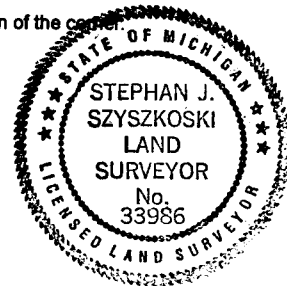
- A. Description of original monument and accessories and/or subsequent restoration:**
 (I4) Quarter corner common to Sections 10 and 11. 1848: Established by Wells Burt midway between Section corners. 40.00 Set maple post. Hemlock 14 S72E 10, Sugar 14 N12W 40. Found no subsequent record.
 (H5) Quarter corner common to Sections 10 and 15. 1848: Established by Wells Burt midway between Section Corners. 40.08 Set Cedar post qr. sect. cor. Cedar 12 S27W 18, Hemlock 14 N48E 21.

B. Description of corner evidence found and/or method applied in restoring or reestablishing corner:

- (I4) The original post and accessories were not recovered. Found, but did not accept, a 1/2" rebar encased in a 4" dia. concrete cylinder about 15' south of the position subsequently monumented. My survey revealed the fact that several other monuments of this composition which I found around the SE1/4 of the NE1/4, Sec. 10 are also erroneous. None of these monuments are of record and appear to be the result of a "home-made" survey. I reestablished the corner midway and on a line of mean true bearing between Sections corners 2641.75' north and south.
 (H5) The original post and accessories were not recovered. I reestablished the corner midway and on a line of mean true bearing between Section corners 2649.66' east and west. From the position monumented, I found a 1" ID iron pipe, projecting 2.3' above the ground, not of record, 21.2' west. The found 1" pipe is not in accord with the official record, and I did not accept it for the corner.

C. Description of monument for corner and accessories established to perpetuate locating the position of the corner:

- | | |
|--|--|
| (I4) Set 1" IDx32" I.Pipe with 4" alum.
MDNR cap. Blazed and scribed:
8" Sugar S21E 5.1' "1/4S NBT"
14" Oak (S'yly in clmp) N26E 42.6' do
5" Sugar S88W 18.3' do
8" Sugar N42W 18.6' do
Set sq'd cedar post adjacent. Bearings
are magnetic. Distances to notch in
lower blaze. | (H5) Set 1" IDx32" I.Pipe with 4" alum.
MDNR cap. Blazed and scribed:
8" Maple N67E 27.8' "1/4S NBT"
6" Sugar S51E 25.6' do
16" Sugar N73W 13.4' do
12" Sugar N08W 18.8' do
Set sq'd spruce post adjacent. Bearings
are magnetic, Var.13 deg. West.
Distances are to notch in lower blaze. |
|--|--|



Signed by Stephan J. Szyszkoski Date 2/4/02
 Surveyor's Michigan License No. 33986

For the Michigan Department of Natural Resources - Office of Property Management