

LAND CORNER RECORDATION CERTIFICATE
Filing Requirement of Act 74, Mich. P.A. 1970

For corners in
Marquette
 (County)

Located in: _____ Corner Code # _____

1. Public Land Survey T 45N R 30W 15
 T _____ R _____ _____
 T _____ R _____ _____
 T _____ R _____ _____

2. Property Controlling S 10 T 45N R 30W 7
 in Section S _____ T _____ R _____ _____
 3. Miscellaneous S _____ T _____ R _____ _____
 Property in Sec. S _____ T _____ R _____ _____

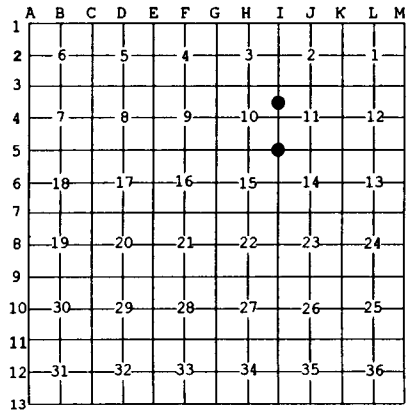
Register of Deeds Stamp & File Number

4. Lot No. _____, Recorded Plat _____
 5. Private Claims _____

7 Oct 17 2001
 15 Oct 16 2001

I, Stephan J. Szyszkoski, in a field survey on _____, 19____ do hereby state that under requirements of P.A. 74, Michigan P.A. of 1970, the corner points mentioned in lines 1 and 2 above were in conformance with regulations and rules therefore as required in the current manual of survey instructions of the United States Department of the Interior, Bureau of Land Management or by a decree of a Court of Law and/or that the corner points mentioned in lines 3, 4 and 5 above were in conformance with the rules of the Michigan Board of Land Surveyors or by a Decree of a Court of Law, established, re-established, monumented, recovered, found as expressed below:

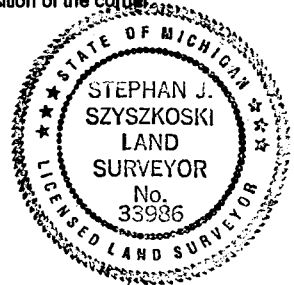
NOTE: Not more than 2 corners, all in the same town and range, may be recorded on this certificate.



A. Description of original monument and accessories and/or subsequent restoration:
 (15) Corner common to Sections 10-11-14-15. Remonumented in the original position by Neal Sperhake RLS in 1965 from original BT W.Pine 30 S20W 9 links. 1"x36" GIP with 4" aluminum Kimberly-Clark Corp. cap. Maple 5 N11W 37 links, Maple 6 N45E 23 links, Y.Birch 10 S51W 54 links.
 (7-Sec. 10) North 1/16 corner, Section 10. Not established in the original survey.

B. Description of corner evidence found and/or method applied in restoring or reestablishing corner:
 (15) Recovered the 1965 monument as described, in good condition, and properly marked to identify the corner. A 1" iron pipe is adjacent.
 (7-Sec. 10) Established the corner midway and on a line of mean true bearing between Section corner 1320.88' north and Quarter corner 1320.88' south. From the position thus established, I found a 1/2" dia. rebar encased in a 4" dia. concrete cylinder, not of record, N01E 7.6' distant, which I did not accept for the corner.

C. Description of monument for corner and accessories established to perpetuate locating the position of the corner:
 (15) Found 1" ID I.Pipe with 4" alum. (7) Set 1" IDx32" I.Pipe with 4" alum.
 Kimberly-Clark cap. Blazed and scribed MDR cap. Blazed and scribed:
 the following: 18" Y. Birch N19W 31.6' "1/16S BT"
 8" Sugar N38E 5.8' "S11 NBT" 10" Sugar N89E 13.2' do
 6" Sugar (N'y of twin) S37E 5.0' do 9" Sugar S10W 13.3' do
 8" Y.Birch (S'yly twin) S59W 38.1' do 10" Sugar N65W 6.3' do
 8" Maple N29W 32.8' do Set sq'd cedar post adjacent. Bearings
 Set sq'd spruce post adjacent. Bearings are magnetic. Distances are to notch in
 are magnetic, Var. 9 deg. West. lower blaze.
 Distances are to notch in lower blaze.



Signed by Stephan J. Szyszkoski Date 2/6/02
 Surveyor's Michigan License No. 33986